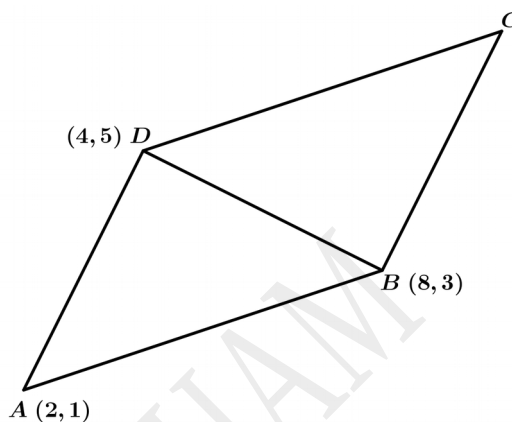


WANDOOR GANITHAM SSLC MATHEMATICS STUDY MATERIAL : 2023
GEOMETRY AND ALGEBRA

QUESTION -1

In the picture , ABCD is a parallelogram .

- a) What are the coordinates of C ?
- b) What are the coordinates of the midpoint of the diagonal BD ?
- c) Write the coordinates of the point at which the diagonals intersect .

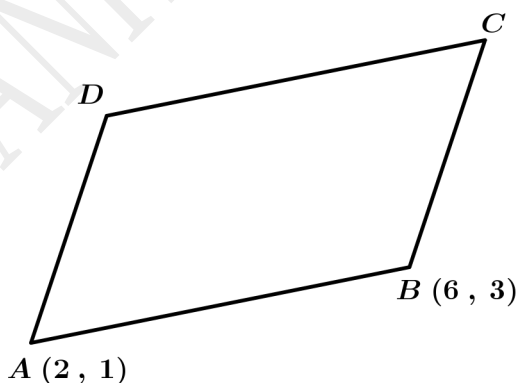


QUESTION -2

In parallelogram ABCD , A (2 , 1) and B(6 , 3) .

The coordinates of the point at which its diagonals intersect are (5 , 4) .

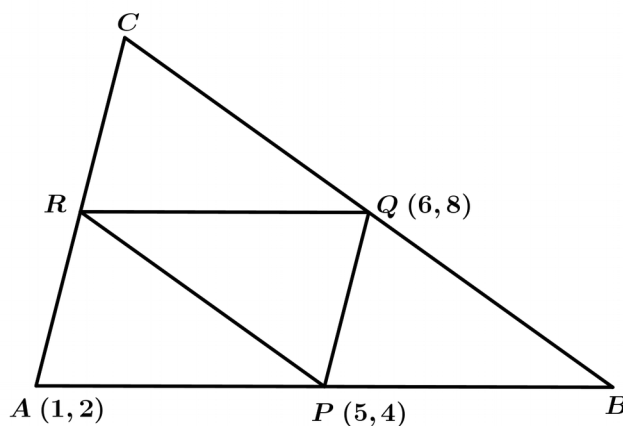
- a) What are the coordinates of the midpoint of the diagonal AC ?
- b) Find the coordinates of the other two vertices of the parallelogram .



QUESTION -3

In the picture P , Q , R are the midpoints of the sides of the triangle .

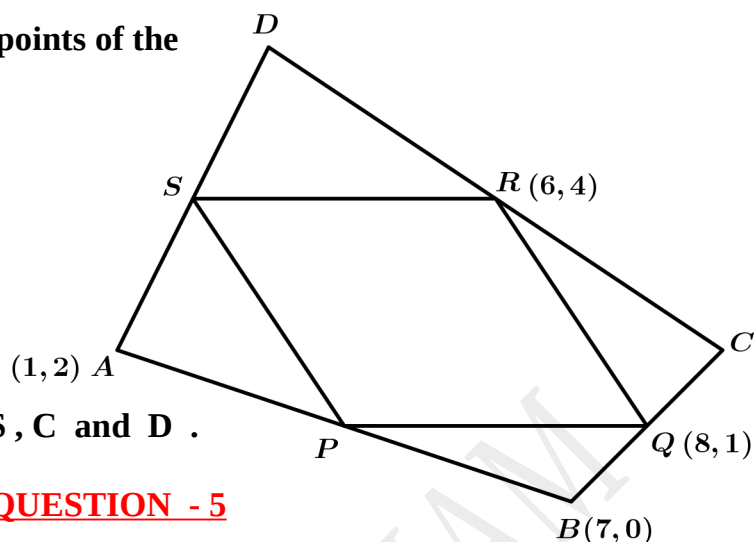
- a) Give the most suitable name for the quadrilateral APQR .
- b) Write the coordinates of the points R , B and C .



QUESTION - 4

In the picture P, Q, R, S are the midpoints of the sides of the quadrilateral ABCD .

- What are the coordinates of P ?
- Give the most suitable name for the quadrilateral PQRS .



- Write the coordinates of the points S, C and D .

QUESTION - 5

In triangle OAB , O (0,0) , A (1,5) , B (6,4) .

- What is the length of OA ?
- Prove that OAB is an isosceles right triangle .
- What are the coordinates of the circum centre and circumradius of the triangle OAB ?
- If (x, y) is a point on the circumcircle of the triangle OAB , prove that

$$x^2 + y^2 - 6x - 4y = 0$$

QUESTION - 6

In triangle ABC , A (3,2) , B (11,8) , C (4,9) .

- What is the length of AB ?
- Prove that ABC is an isosceles triangle .
- What are the coordinates of the midpoint of the side AB ?
- What is the perpendicular distance from the vertex C to its opposite side ?
- Compute the area of the triangle ABC .

QUESTION - 7

A circle is drawn with the line joining (1,2) and (7,10) as diameter .

- What are the coordinates of the centre of the circle ?
- What is the radius of the circle ?

c) Write the equation of the circle .

d) What are the coordinates of the points at which the the circle cuts the y axis ?

QUESTION - 8

The coordinates of the points A and B are $(1,2)$ and $(6,7)$. P is a point on the line AB with $AP : PB = 1 : 4$.

a) What are the coordinates of P ?

b) What are the coordinates of the midpoint of the line PB ?

c) Find the coordinates of the point Q on the line AB with $AQ : QB = 3 : 2$.

QUESTION - 9

Consider a line passing through the points $(1,4)$ and $(3,10)$

a) Find the slope of the line .

b) Write the coordinates of two more points on this line .

c) Check whether $(13,40)$ is a point on this line or not .

c) Prove that the points $(1,3)$, $(3,10)$ and $(15,48)$ are the vertices of a triangle .

QUESTION - 10

Consider a line passing through the points $(2,8)$ and $(4,6)$

a) Find the slope of the line .

b) Write the coordinates of two more points on this line .

c) If (x, y) is a point on this line , prove that $x + y - 10 = 0$.

c) Find the coordinates of the point at which this line cuts the axes .

QUESTION - 11

The equation of a line is $x + 2y - 6 = 0$.

a) Find the coordinates of the point at which this line cuts the x axis .

b) Find the coordinates of the point at which this line cuts the y axis .

c) Find the slope of the line .

d) Is this line passes through the point $(4,1)$? Justify your answer .

QUESTION - 12

a) What is the length of the line AB in the figure ?

b) What is the radius of the circle in the figure ?

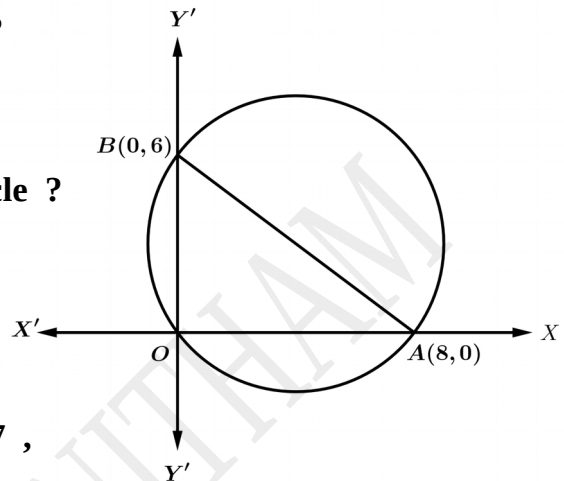
c) What are the coordinates of the centre of the circle ?

d) If (x, y) is a point on this circle , prove that

$$x^2 + y^2 - 8x - 6y = 0 .$$

e) If the x coordinate of a point on this circle is 7 ,

what will be its y coordinate ?



QUESTION - 13

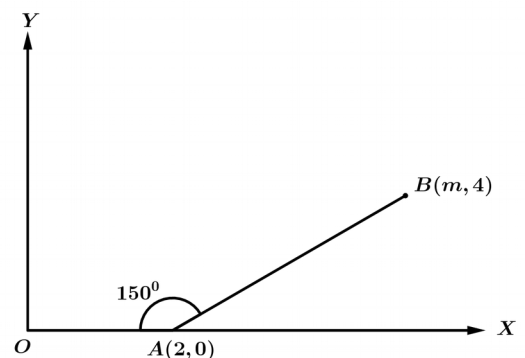
a) What is the perpendicular distance from the point

B to the x axis ?

b) What is the value of m ?

c) If (x, y) is a point on the line AB ,

prove that $\frac{x - 2}{y} = \sqrt{3}$.



QUESTION - 13

a) Compute the slope of the line AB .

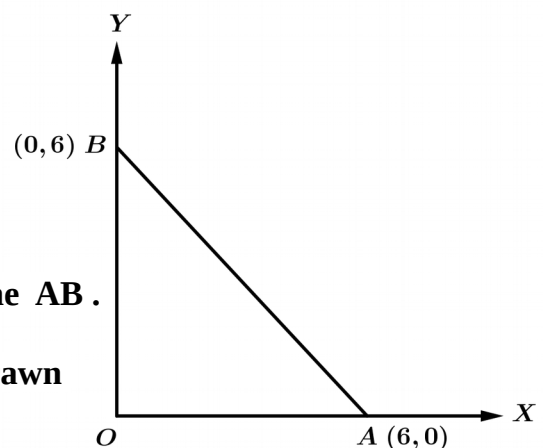
b) If (x, y) is a point on the line AB , what is the

relation between x and y ?

c) Write the coordinates of other two points on the line AB .

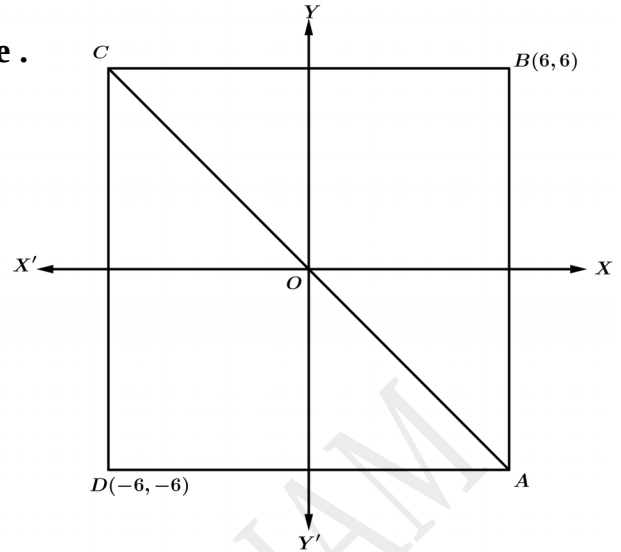
d) What are the coordinates of a point on the circle drawn

with AB as diameter ?



QUESTION - 14

In the picture origin is the midpoint of the square .



- a) Write down the coordinates of A and C .
- b) Compute the slope of the line AC .
- c) If (x, y) is a point on the line AC , what is the relation between x and y ?
- d) Write the coordinates of other two points on the line AC .
- e) Prove that the product of the slopes of the diagonals of the square is -1 .

QUESTION - 14

The slope of a line passing through $(4,3)$ is $\frac{3}{2}$.

- a) Write down the coordinates of another two points on this line .
- b) What are the coordinates of the point at which the line cuts the x axis .
- c) What are the coordinates of the point at which the line cuts the y axis .
- d) What is the equation of this line ?