

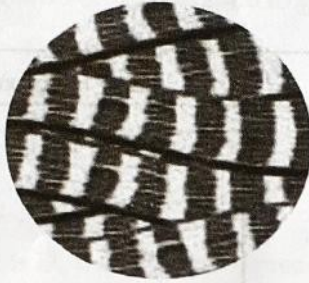
Biology

Time: 40 minute
Score : 20

Answer any three from questions 1 to 4. Each question carries one score.

(3x1=3)

1. Which among the following is not a prokaryote? 1
a) Mycoplasma b) Amoeba c) Bacteria d) Cyanobacteria
2. Identify the animal tissue and write the name. 1



3. Choose the correct statement related to xylem tissue. 1
(i) Provides support and strength to plant parts.
(ii) Transports food synthesised in the leaves to various parts of the plant body.
a) (i) and (ii) correct. b) (ii) only correct.
c) (i) only correct. d) (i) and (ii) incorrect.
4. Find out the odd one and write the common feature of others. 1
a) Carotene b) Chlorophyll c) Chloroplast d) Xanthophyll

Answer any 4 from questions 5 to 9. Each carries 2 score.

(4x2=8)

5. Analyze the statement given below and write reasons. 2
"As the fruits ripen, their color and taste change."
6. Correct the mistakes if any in the underlined parts of the given pairs. 2
a) M. J. Schleiden - Prokaryote
b) Rudolf Virchow - Plant cell
c) Robert Brown - Nucleus
d) Theodor Schwann - Animal cell
7. Write two main concepts that can be included in a class seminar on the following topic. 2

"Stem cell research and future treatments"

8. Write the importance of the following materials during the preparation of slides to be observed through a microscope.

- a) Glycerin 1
- b) Stain 1

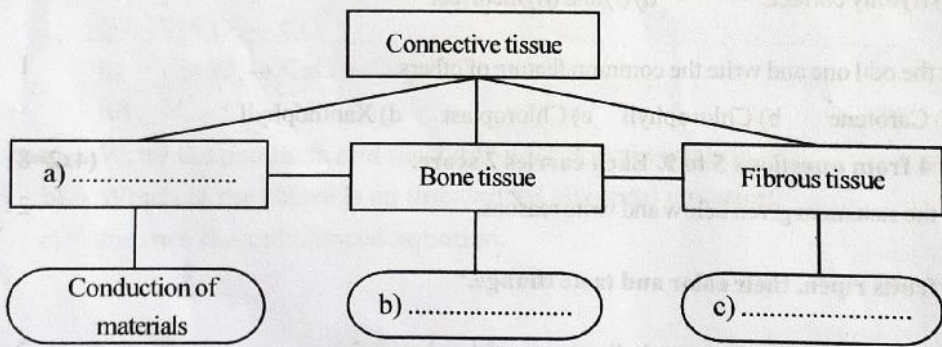
9. Complete the table using the given hints. 2

- Thickness of the cell wall.
- Quantity of cytoplasm.

Meristematic cells	Mature cells

Answer any 3 from questions 10 to 13. Each carries 3 score. (3X3=9)

10. Complete the illustration related to connective tissues suitably. 3

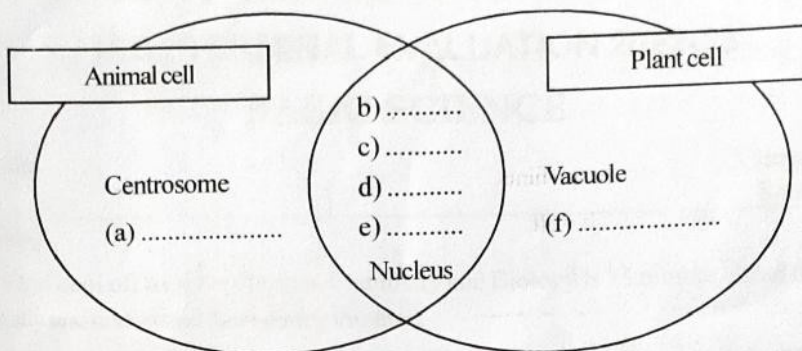


11. Identify and write three matching pairs from the facts given in the box. 3

Model : Golgi complex - Enzymes

Storage of energy, Vacuole, Conduction of materials, Mitochondria,
Stores excretory materials, Golgi complex, Endoplasmic reticulum, Enzymes

12. Complete the illustration suitably.



13. Rearrange column B and C according to column A.

A	B	C
a) Collenchyma	Composed of cells that are uniformly thick all over the cell wall.	Photosynthesis
b) Parenchyma	Composed of cells that are thick only at the corners of the cell wall.	Provides strength and support to plant parts.
c) Sclerenchyma	Composed of cells with the simplest structure.	Provides flexibility and support to plant parts.