

Class : 6

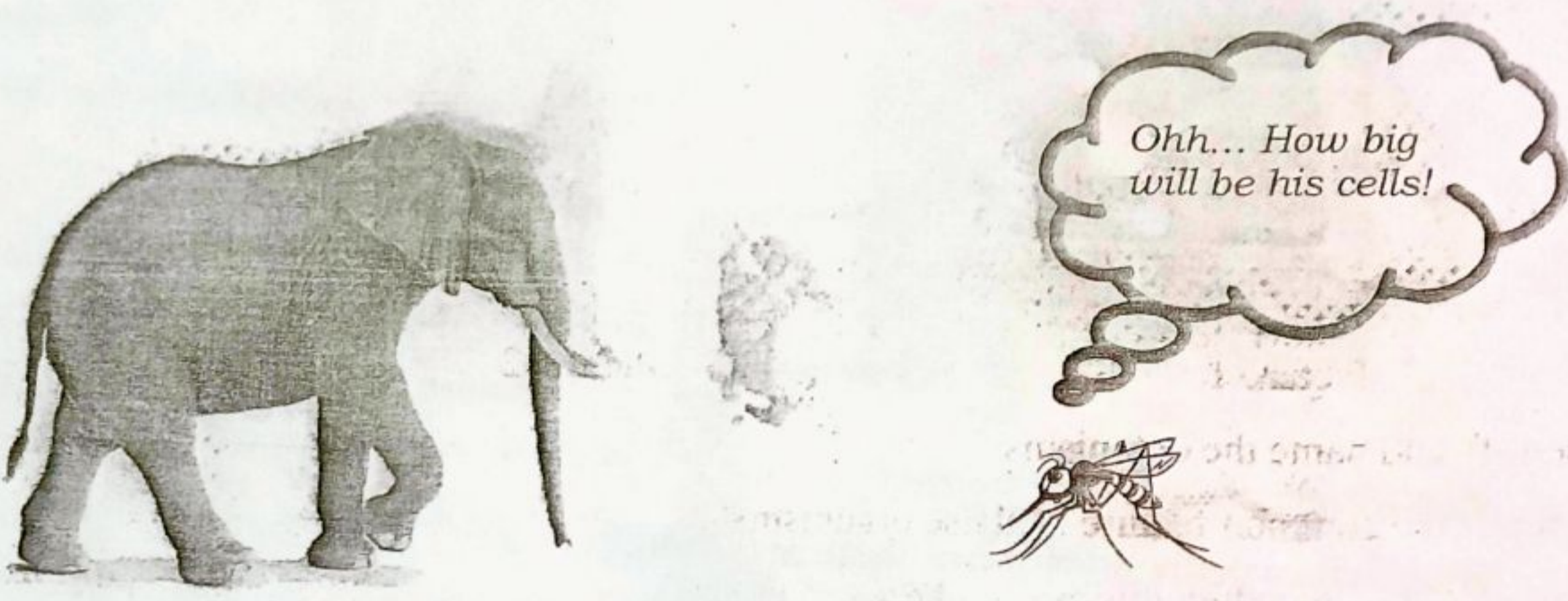
Time : 2 hrs

INSTRUCTIONS

- First 15 minutes is cool off time. This time should be used to read and understand the activities.
- Total 10 activities are given. Answer any 8 activities.

Activity 1

Observe the cartoon.



- A. Do you agree with Mosquito's thought? Give reasons.
- B. Different stages of observation of cheek cells is given below. Arrange them in the correct order.

Scrap the internal surface of the cheek using a new toothbrush.

Cover it with the cover glass

Observe the specimen through the microscope.

Place the cheek scrap in a drop of water taken on the slide.

Wash the mouth thoroughly with pure water.

Add a drop of stain

1. Wash the mouth thoroughly with clean water
2.
3.
4.
5.
6. Observe the specimen through the microscope.

Activity 2

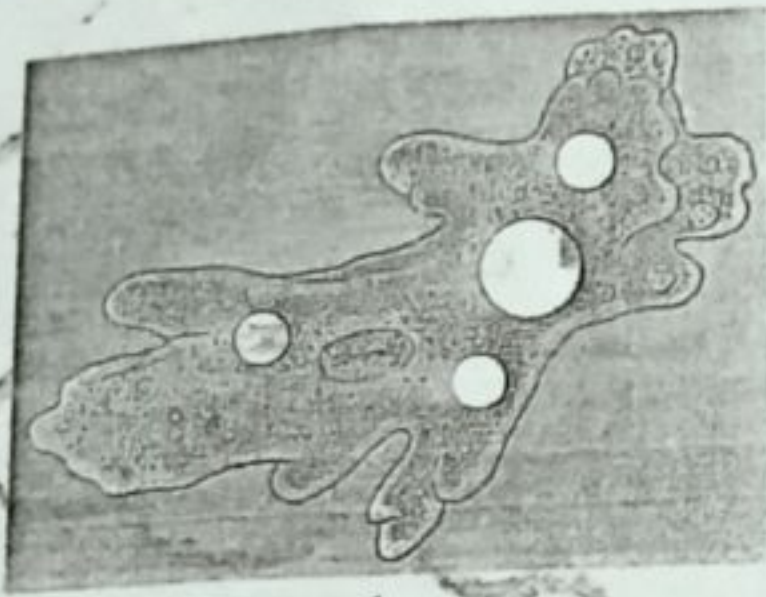
A. Complete the table related to the various changes taking place in the kitchen.

	Chemical Changes
(i)	Milk turns to curd
Ghee Melts	(iv)
(ii)	(v)
(iii)	

B. 'Both chemical and physical changes are taking place while burning a candle.'
Do you agree with this statement? Justify your answer.

Activity 3

Observe the picture given below.



Picture 1



Picture 2

- A. Identify and name the organisms?.
- B. What is the common feature of these organisms?
- C. Describe the procedure to observe these organisms.

Activity 4

Observe the following situations.



Situation 1



Situation 2



Situation 3



Situation 4

A. Complete the table.

Situation	Forms of energy that undergoes change	Forms of energy produced	Forms of energy we make use of
1	Chemical Energy	(i)	Light, sound
2	(ii)	Heat, light, sound	(iii)
3	Chemical energy	(iv)	(v)
4	Electrical energy	(vi)	Light

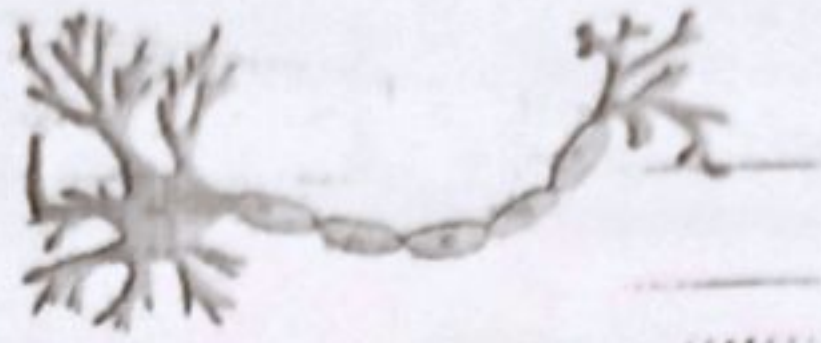
B. Analyse the table and write any two findings.

Activity 5

Observe the pictures.

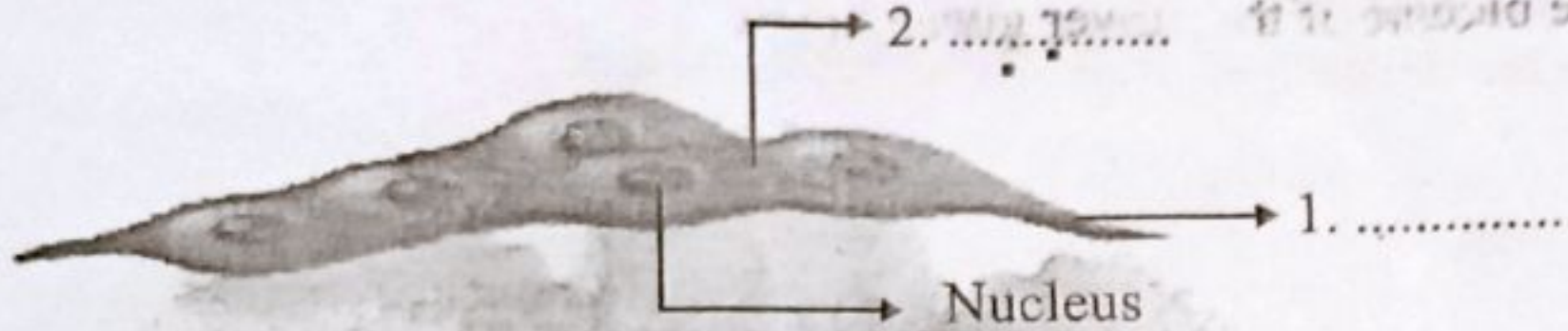


Picture 1



Picture 2

- A. Identify the cells and write their names.
- B. Write the names of parts marked as 1 and 2 in the picture of muscle cell given below.

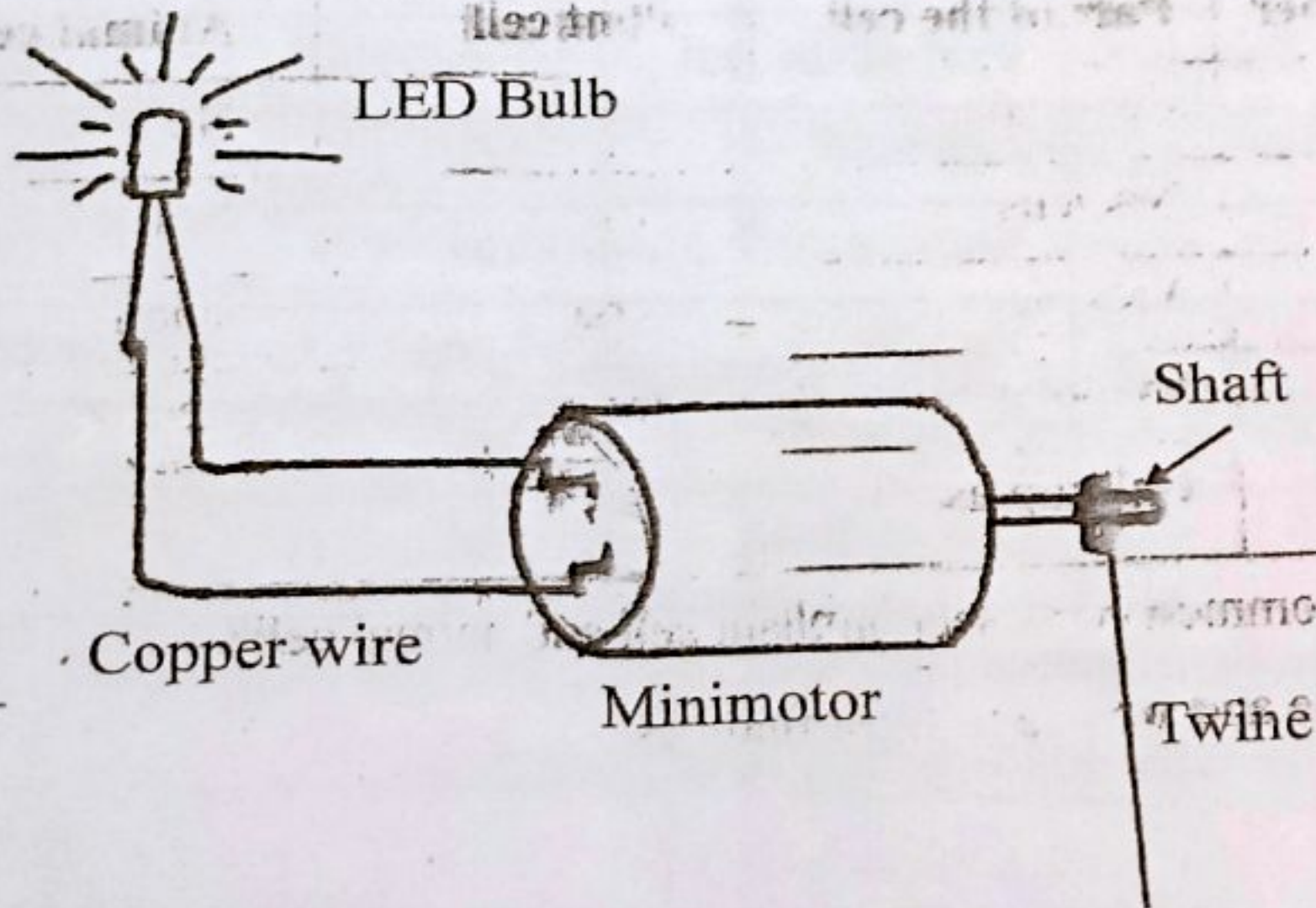


- C. Parts of the cell and their peculiarities are given in the table below. Match them suitably.

Parts of the cell	Peculiarities
Cytoplasm	Centre of the cell
Nucleus	Helps in photosynthesis
Cell membrane	Matrix filled inside the cell
Chloroplast	Covering of the cell

Activity 6

Observe the picture of a device which can glow an LED bulb using minimotor.



When the shaft of minimotor is rotated fast using a twine, the LED bulb glows.

- A. List out the energy changes taking place in this activity.
- B. What are the energy changes taking place while a cell is used instead of minimotor?
- C. Write any other situation in which energy change takes place?

Activity 7

Parts of a flower and their functions are given in the flash cards.

Pedicel
(i)

(ii)
Holds different parts of flowers

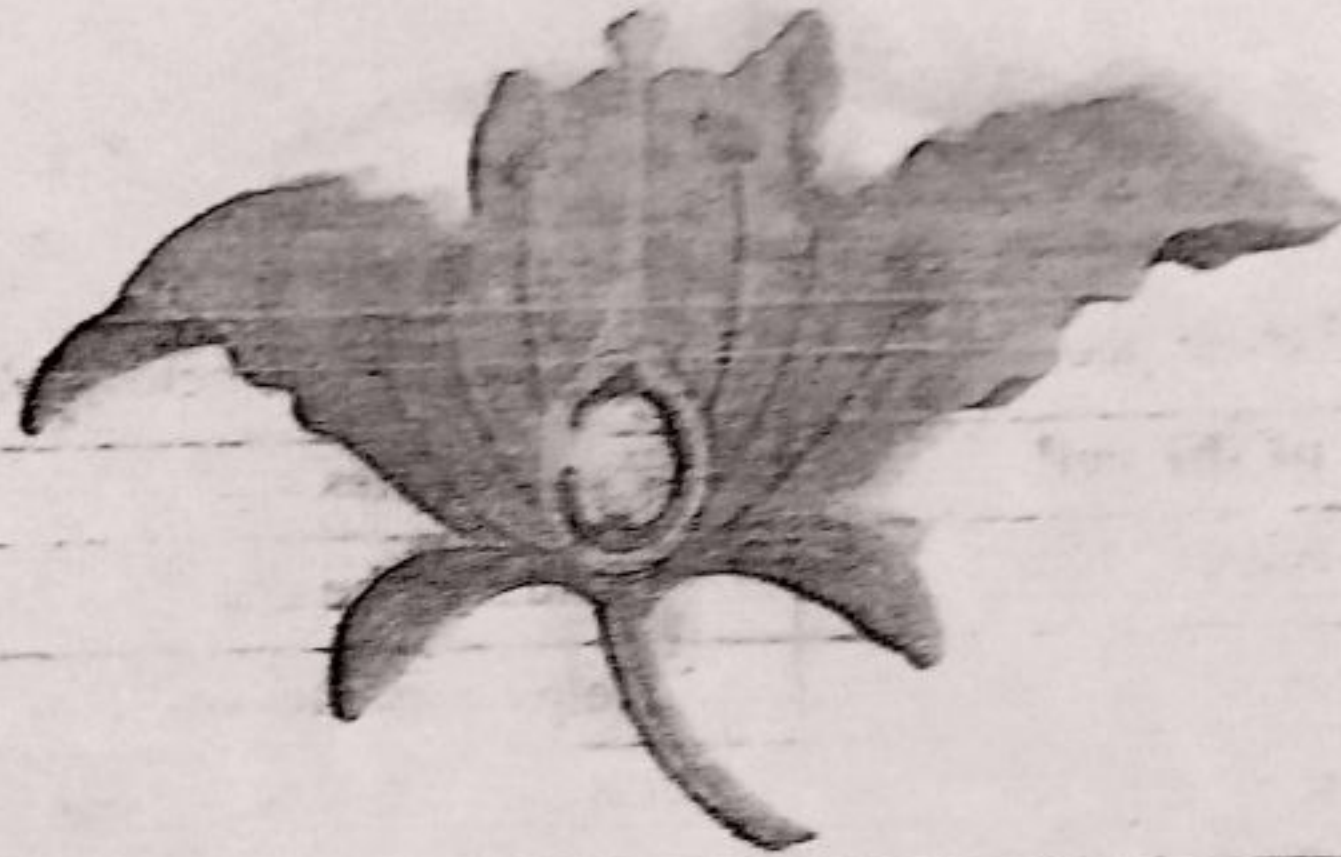
Corolla
(iii)

(iv)
Female reproduction part

Androecium
(v)

Calyx
(vi)

- A. Complete the flash cards.
Observe the picture of the flower given below.



- B. Is the flower, unisexual or bisexual? Why?

Activity 8

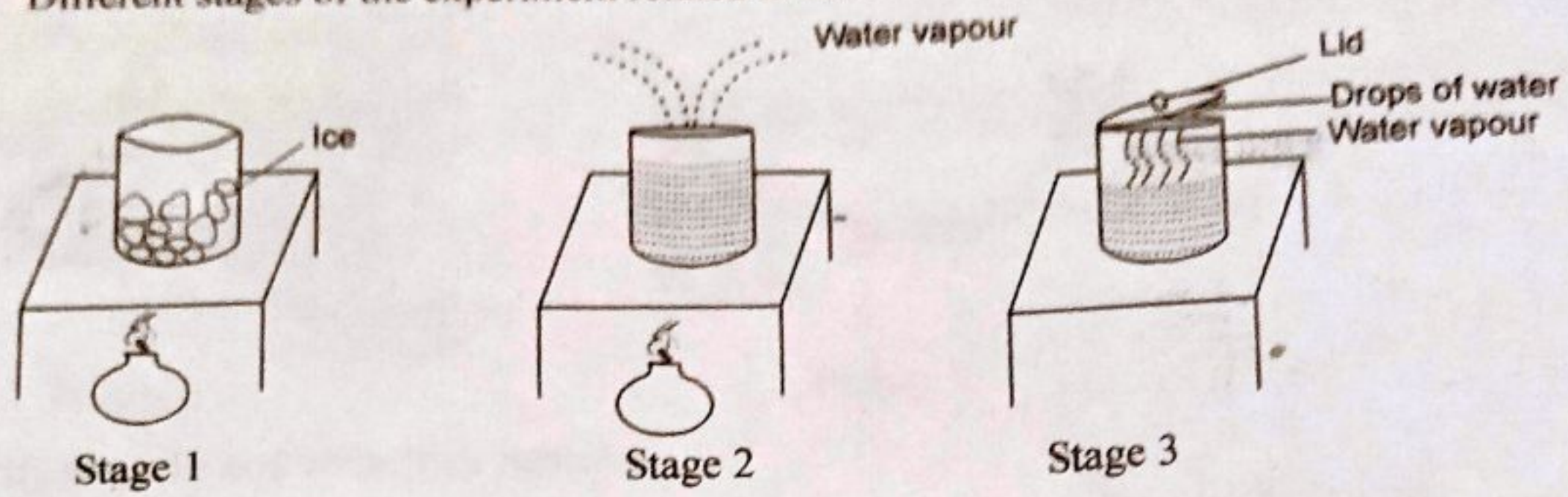
Examine the table

Number	Part of the cell	Plant cell	Animal cell
1.	Cell wall	Yes	No
2.	Nucleus	Yes	Yes
3.	Vacuole	Large	small
4.	Cytoplasm	Yes	Yes
5.	Chloroplast	Yes	No

- A. Which are the common parts seen in plant cell and animal cell?
B. Analyse the table and write any three findings.

Activity 9

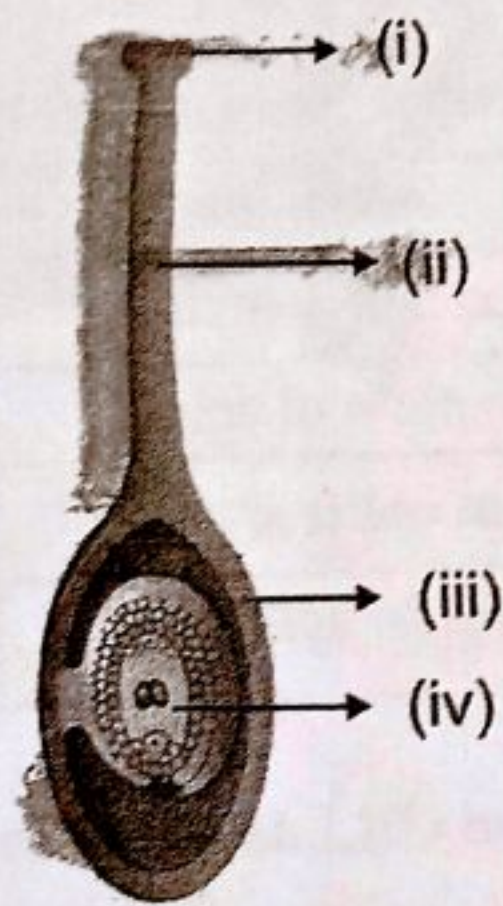
Different stages of the experiment related to state of change of water are given below.



- A. Write any three findings of this experiment.
- B. On the basis of this experiment, explain how rain is formed?

Activity 10

Observe the picture given below.



- A. Draw the picture and label the parts.
- B. Where are the male gametes seen in a flower? Explain.