



# SAMAGRA SHIKSHA, KERALA

FIRST TERMINAL EVALUATION 2023-24

## BIOLOGY

Time : 1 1/2

Class : IX

Score : 40

### Instructions:

1. First 15 minutes is given as cool off time. This time is to be used for reading and understanding the questions
2. Answer the questions based on instructions.
3. Answer the questions according to the score and time.

### I. Answer any five questions from 1 to 6. Each question carries 1 score

(5 x 1 = 5)

1. Choose the stored form of glucose in legumes (starch, fat, fructose, protein) (1)
2. Choose the correct statement related to saliva from the following (1)
  - a) Lysozyme - destruction of germs
  - b) salivary amylase - converts protein to peptone
  - c) pepsin - convert starch to maltose
  - d) mucus - convert fat into smaller particles
3. Choose the correct statement related to chlorophyll b (1)
  - i) Participate directly in photosynthesis
  - ii) Absorb light and transfer it to chlorophyll a
  - iii) Found in the stroma of chloroplast

### Answers:

- |                      |                       |
|----------------------|-----------------------|
| a) (i), (ii) correct | b) (ii) only correct  |
| c) (i) only correct  | d) (iii) only correct |

4. Identify the word pair relation and fill in the blank (1)

Fibrinogen : Coagulation of blood  
Albumin : .....
5. Identify the blood vessel given in the figure and write the name. (1)



6. Choose the digestive juice without enzymes.

bile, intestinal juice, gastric juice, pancreatic juice

(1)

II. Answer any 6 questions from 7 to 13. Each question carries 2 score. (6x2= 12)

7. Give reason for the following:

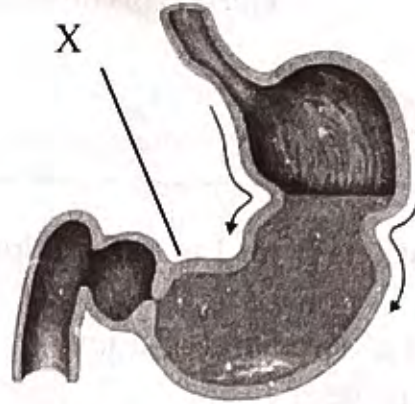
a. Light phase takes place in grana.

(1)

b. Xanthophyll and Carotene are called accessory pigments.

(1)

8. Observe the figure and answer the questions.



a. Identify the muscle labelled as 'x' and write its function

(1)

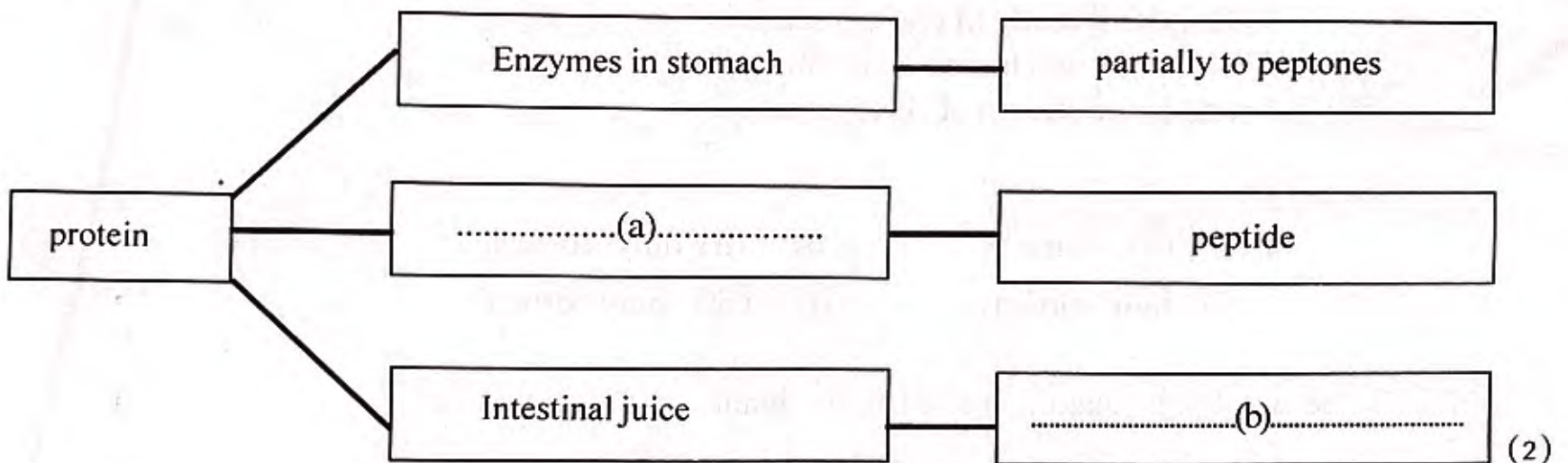
b. What is the role of the muscles in the stomach wall in digestive process

(1)

9. Write two suitable examples indicating the role of plants in the mitigation of natural disasters

(2)

10. Complete the illustration related to the digestion of protein.



11. Read the statement and write the reason.

“ Fibre containing food items are to be included in the diet“

(2)

12. One of the phases of photosynthesis is known as Calvin cycle.

a. Identify the phase.

(1)

b. Why it is known as Cavin cycle ?

(1)

13. Analyse the hint given below and answer the questions.

Hint : Valves prevent the backward flow of blood to atria when ventricles contract

a. Which are the valves mentioned in the hint ?

(1)

b. Where are these valves located in the heart ?

(1)

III. Answer any 5 questions from 14 to 20. Each question carries 3 score.

(5 x 3 = 15)

14. Make suitable pairs using the information given in the boxes.

A

- ◆ Absorption of salts utilising energy
- ◆ Absorption of water molecules
- ◆ Absorption of fatty acid

B

- ◆ Simple diffusion
- ◆ Active transport
- ◆ Facilitated diffusion
- ◆ Osmosis

(3)

15. Arrange the information regarding blood vessels in the table given below.

- Valves are seen inside
- Minute pores on the walls
- Blood flows with high speed and high pressure
- Made up of single row of cells
- Carries blood to the heart
- Thick and elastic wall

Veins	Arteries	Capillaries
■	■	■
■	■	■

(3)

16. Write the importance of the following related to human digestive system

- a. Certain bacteria reside in the large intestine.
- b. Hydro chloric acid is present in stomach.
- c. Villi are present in the wall of small intestine.

(1)

(1)

(1)

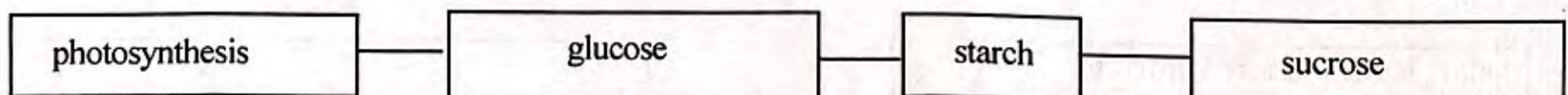
17. Ocean pollution reduces the level of oxygen in the atmosphere.

- a. Do you agree with this statement ? Why ?
- b. Write any two causes of ocean pollution .

(1)

(2)

18. Observe the illustrations and answer the questions



- a. Why glucose is converted to starch ?
- b. How does plants utilise starch ?
- c. How does starch reach different parts of the plant ?

(1)

(1)

(1)

19. Observe the figure and answer the questions



a) Identify and write X and Y.

(1)

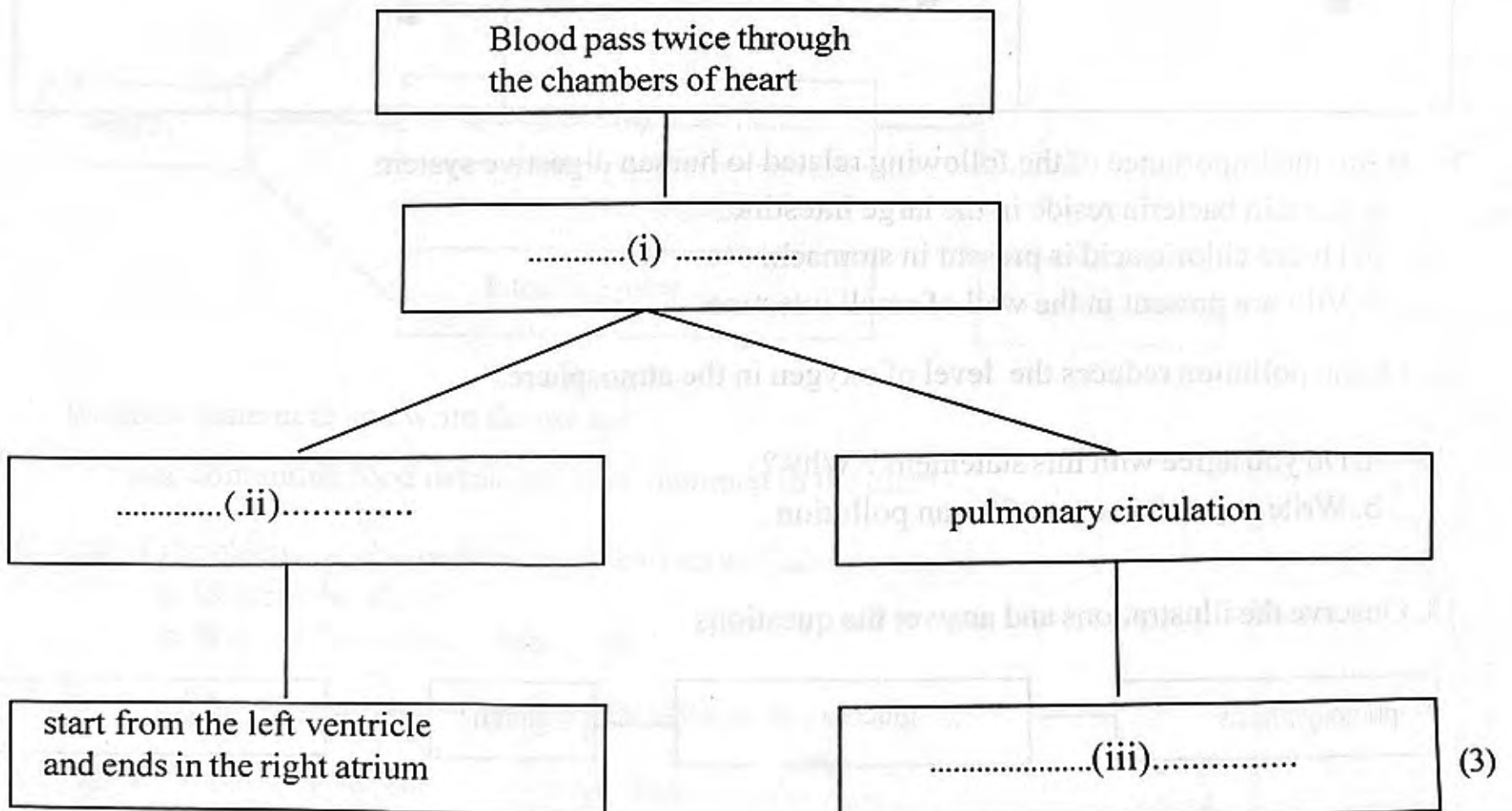
b) Write the function of the digestive juice present in X

(1)

c) Name any two enzymes present in the digestive juice secreted by Y

(1)

20. Complete the illustration related to human circulatory system.



IV. Answer any 2 questions from 21 to 23. Each question carries 4 score.

(2 x 4= 8)

21. Rearrange column B and C according to column A

www.educationobserver.com

A	B	C
Right atrium	Aorta	From heart to lungs
Right ventricle	Pulmonary vein	From heart to different part of the body
Left atrium	Inferior venacava	From lungs to heart
Left ventricle	pulmonary artery	From different parts of the body to heart.

(4)

22. Redraw the diagram. Identify and label the parts mentioned below.

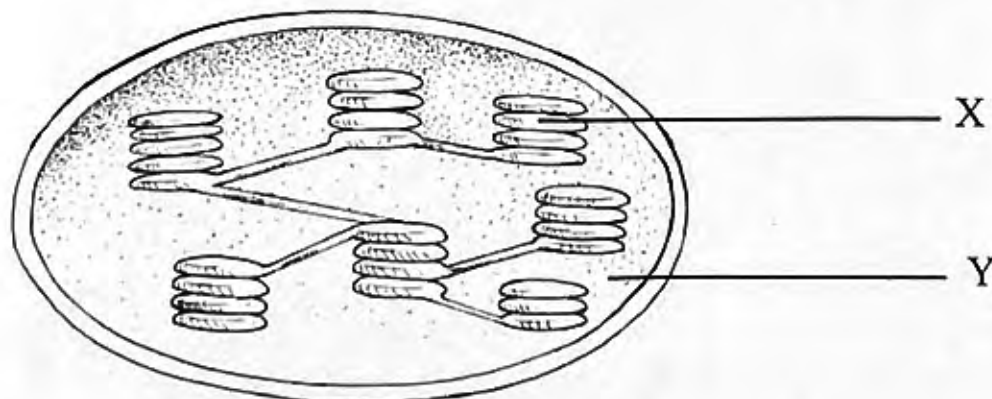


(For redraw 1 score)

- Living tissue which forms the tooth.
- Part where blood vessels are present.
- The hardest part of the tooth.

(1)  
(1)  
(1)

23. Observe the figure of chloroplast and answer the following questions



- Identify and name X and Y

(1)

- Explain the photosynthetic processes which take place in X and Y

(3)