

6/10/18

KENDRIYA VIDYALAYA AFS BAGDOGRA

HALF YEARLY EXAMINATION

2018-2019

CLASS-VI
SUBJECT- SCIENCE

M.M-80 MARKS
TIME- 2 ½hours

GENERAL INSTRUCTIONS:-

1. Question no. 1 to 5 are very short answer type questions carrying 1 mark each.
2. Question no. 6 to 14 consists of short answer type questions carrying 2 marks each.
3. Question no. 15 to 23 are short answer type questions carrying 3 marks each.
4. Question no. 24 to 29 are long answer type questions carrying 5 marks each.

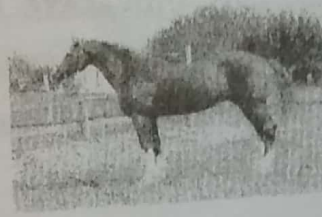
SECTION-A

Choose the correct answer from the options given below:
(1X5=5)

- 1) Give two examples of synthetic fibres .
- 2) What is leaf venation ?
- 3) How will you separate the stones from grains ?
- 4) What is a transparent substance ?
- 5) Define nutrients.

SECTION-B

- 6) What are herbivores? Give two examples of herbivorous animals.
- 7) What is the difference between fibre and fabrics?
- 8) What will happen when we mix sugar in a glass of water? What is this property called ?
- 9) What is sieving? Where is it used?
- 10) What is a reversible change? Give an example.
- 11) Draw a labeled diagram of a plant leaf?
- 12) i) What is ball and socket joint?
ii) Write one difference between bone and cartilage.
- 13) Identify the habitat of the following animals :-



- 14) Mention the name of the disease caused by the deficiency of following vitamin B1, D, A and C.

SECTION C

- 15) i) What are the ingredients used to prepare kheer? (3)
ii) Distinguish between carnivores and Omnivores. Give an example of each. (1+2)
- 16) i) What is a balanced diet?
ii) Why the vegetables are not washed after cutting? (2+1)
- 17) (i) What is the difference between natural and synthetic fibre? (1+2)
(ii) What is spinning? Name the devices used for spinning.
- 18) Given below are the names of some objects and material:
Water, basket ball, orange, sugar, globe, apple and earthen pitcher
Group them as:
(a) Round shaped and other shapes
(b) Eatables and non-eatables (1.5+1.5)
- 19) Why do we need to separate different components of a mixture? Give two examples. (1+2)
- 20) What is reversible change? Explain the changes occurring in a burning candle. (3)
- 21) Write down the functions of a stem in a plant. (3)
- 22) What is pivotal joint? Why can our elbow not move backward? (1+2)
- 23) (i) Why the animals living in the mountain region are having long hairs?
(ii) Differentiate between the biotic and abiotic components. Give one example each. (1+2)

SECTION-D

- 24) A mixture of iron nails, oil, water and tea leaves and salt is provided to you. Give step-wise instructions to separate each component from the mixture. (5)
- 25) a) Draw the diagram of the parts of a flower. Label all its parts.
b) Write two functions of root in a plant?
c) What are climbers? (2+2+1=5)

- 26) a) How a metal rim is fixed on a wooden wheel of cart?
b) Is it possible to get back the ball of dough after baking the roti? If not then explain.
c) What type of change takes place in wet cloths to dry clothes? (2+2+1=5)

27) Give two example each of the following properties: (5)

- (i) lustrous
- (ii) insoluble
- (iii) transparent
- (iv) opaque
- (v) float

28) (a) How will you test the fat in any food (2+2+1=5)

- b) Name the two foods rich in
- i) carbohydrate
 - ii) vitamine C
- c) What is obesity?

29) How are cactus adapted to servive in desert? (5)