

# Govt Higher Primary School

Std : 2

First Summative Evaluation (Bilingual)

Marks : 60

Subject : English

Date :

Student Name :

Roll NO :

1. Write the capital and small letter alphabets.

2x5=10

<b>A</b>												
												<b>Z</b>

<b>a</b>												
												<b>z</b>

2. Look at the pictures and write corresponding greetings.

1x4=4







3. Write the beginning sound.

1x5=5



    **at**



    **at**        **all**



    **nt**



    **en**

4. Name the objects and circle their beginning letters.

1x3=3



**V W U v u w**



**X Y Z x y z**



**V W U v u w**

5. Choose the correct vowel to finish each word. ( a , e , i , o , u )

1 x4=4



b\_\_n



c\_\_t



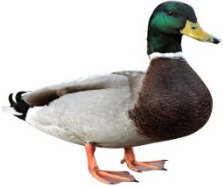
c\_\_w



w\_\_y

6. Label the pictures with the help of given words.  
( cock , parrot . duck , crow )

1x4=4










7. Match the pictures with the correct words.

1x5=5



pencil

eraser

bag

crayons

sharpner

8. Fill in the blanks with “-eg , -eb , -en , -ed , -et ”

1x4=4



t\_\_



b\_\_



l\_\_



j\_\_

9. Read the word and circle the correct picture.

1x2=2

tub



sun



10. Build some words yourself. ( one is done for you )

1x2=2

h + a + t = hat

l + e + g =

s + i + x =

11. Use the picture bank to frame sentences. One is done for you.

1x2=2



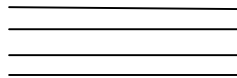
This is a table.



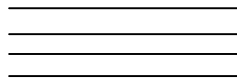
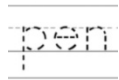
12. Trace and write.

1x2=2

shut



pen



13. Match the rhyming words.

½ x4=2

box

kin

fit

fox

tin

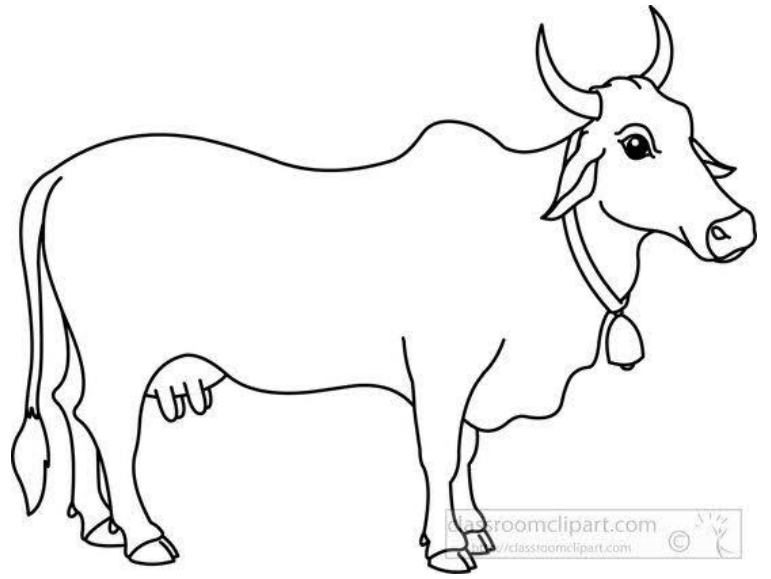
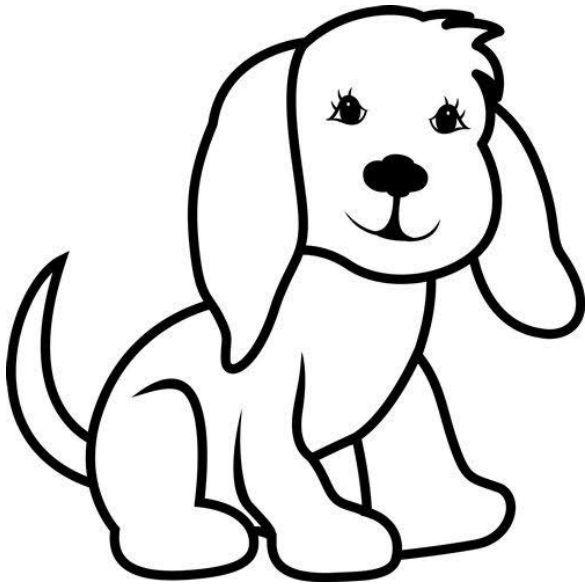
fog

jog

hit

14. Colour the picture and write the animal name in the box,

2 ½ x 2 = 5



15. Label the picture with the help of clues.

1x6=6

Clues → window, garden, light, roof, door, tree

