





(IDENTIFICATION AND CLASSIFICATION 25 )

VERY SHORT ANSWER TYPE QUESTIONS (10\*1=10)

1. Two sources of water \_\_\_\_\_
2. Two uses of water \_\_\_\_\_
3. One insectivorous plant \_\_\_\_\_
4. Baby plant is called \_\_\_\_\_
5. Two veggies from South America. \_\_\_\_\_
6. Two agents of seed dispersal. \_\_\_\_\_

SHORT ANSWER TYPE QUESTIONS. (5\*2=10)

1. Write four things you will carry in a mountaineering camp.

\_\_\_\_\_  
\_\_\_\_\_

2. Tick the things which dissolve in water.

Jaggery \_\_\_\_\_ petrol \_\_\_\_\_  
Wood \_\_\_\_\_ Dettol \_\_\_\_\_

3. Name two poisonous and two non- poisonous snakes.

Poisonous snakes                      non- poisonous snakes  
\_\_\_\_\_  
\_\_\_\_\_

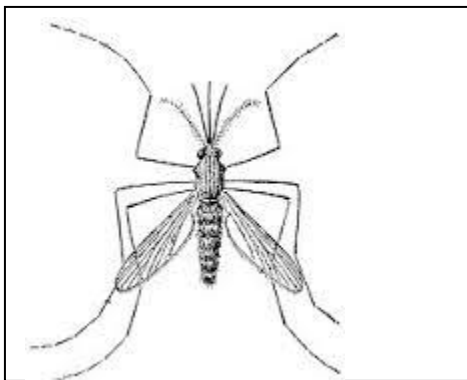
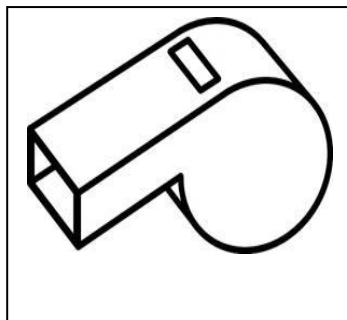
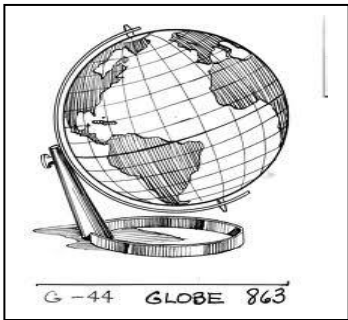
4. Classify according to taste(sweet/sour/salty/bitter)

Haldiram's namkeen \_\_\_\_\_ lemon \_\_\_\_\_  
Laddoo \_\_\_\_\_ neem leaves \_\_\_\_\_

5. Match food items with the method of preservation.

Food items	Methods
Milk	Put in a bowl and keep the bowl in a container with some water
Cooked rice	Wrap in a damp cloth
Green coriander (dhania)	Boil it
Onion/ Garlic	Keep it in a dry open place

7. Identify the following pictures and write their names :



( DISCOVERY OF FACTS 25 )

1. Tick ( ) the correct option : 1x5=5

a) When have you seen our national flag be hoisted-

a) On Republic day b) on Gandhi Jayanti c) on Diwali d) On Flag day

b) Who was the first woman who climbed the Mount Everest ?

a) Junko Tabei b) Bachhendri pal c) Saniya Mirza d) Maria Thomas

c) The normal range of haemoglobin in blood of human being is

a) 12-16 gm/dl b) 8-10 gm/dl c) 4-6gm/dl d) 16-20 gm/dl

d) The animal used by bomb squad

a) cat b) dog c) snake d) horse

e) Rhinoceros is hunted for

a) Musk b) horn c) tusk d) skin

2. Write the name of some animals whose ears are bigger than our ears ? 5x2=10

Ans :-

3. Name the food items which are rich in iron contains?

Ans:-

4. What do you understand by proper food ?

Ans :-

5. When you buy anything from the market what do you look for on the packet ?

Ans :-

6. Write the name of the plant which hunts and where it is found ?

Ans :-

6. What are the responsibilities of a leader in a mountaineering camp? 2x5=10

1. \_\_\_\_\_
2. \_\_\_\_\_
3. \_\_\_\_\_
4. \_\_\_\_\_
5. \_\_\_\_\_

7. Write  True  False for the correct statement and  False  True for the wrong statement.

- a) The increasing population is also contributing to shortage of water. \_\_\_\_\_
- b) The soil around the trees should be covered with concrete and cement. \_\_\_\_\_
- c) We should not pay the water bill. \_\_\_\_\_
- d) We should put a motor pump directly in the Jal Board pipeline to overcome water shortage. \_\_\_\_\_
- e) Rainwater should be collected in underground tanks for future use. \_\_\_\_\_