

Standard: 5

SOCIAL SCIENCE

Time: 2 Hrs.

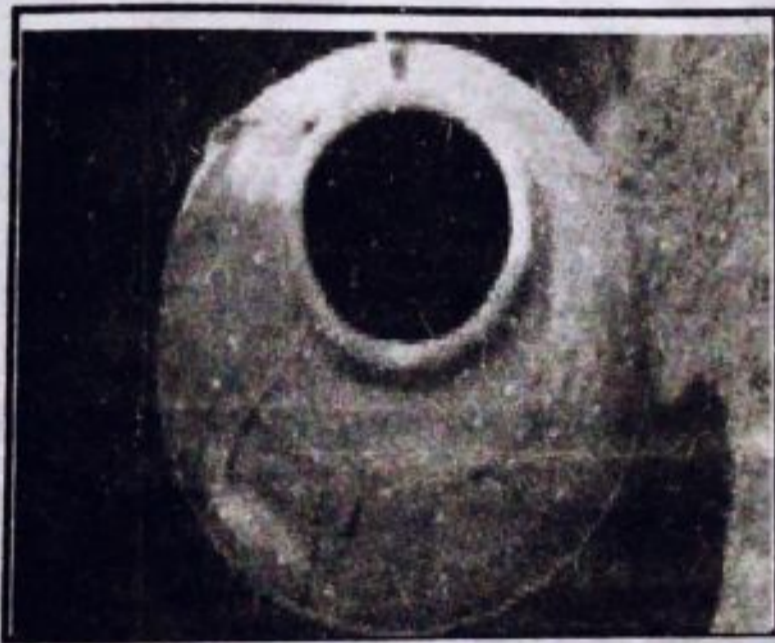
Instructions

1. 15 minutes cool off time is allowed. This time can be used to read and comprehend the activities.
2. Answer any 6 from the 8 Activities given
3. Answer all the sub questions of the selected activities.

Activity 1

A museum keeps the objects or their remains that were once used by men.

- A) The pictures given below are the remains associated with the funeral practices in ancient times. Write their names.



1.....



2.....

- B) It has been decided to set up a history museum under the leadership of the Social Science Club. What are the things to be collected in the history museum?

- Old utensils
-
-

Activities given

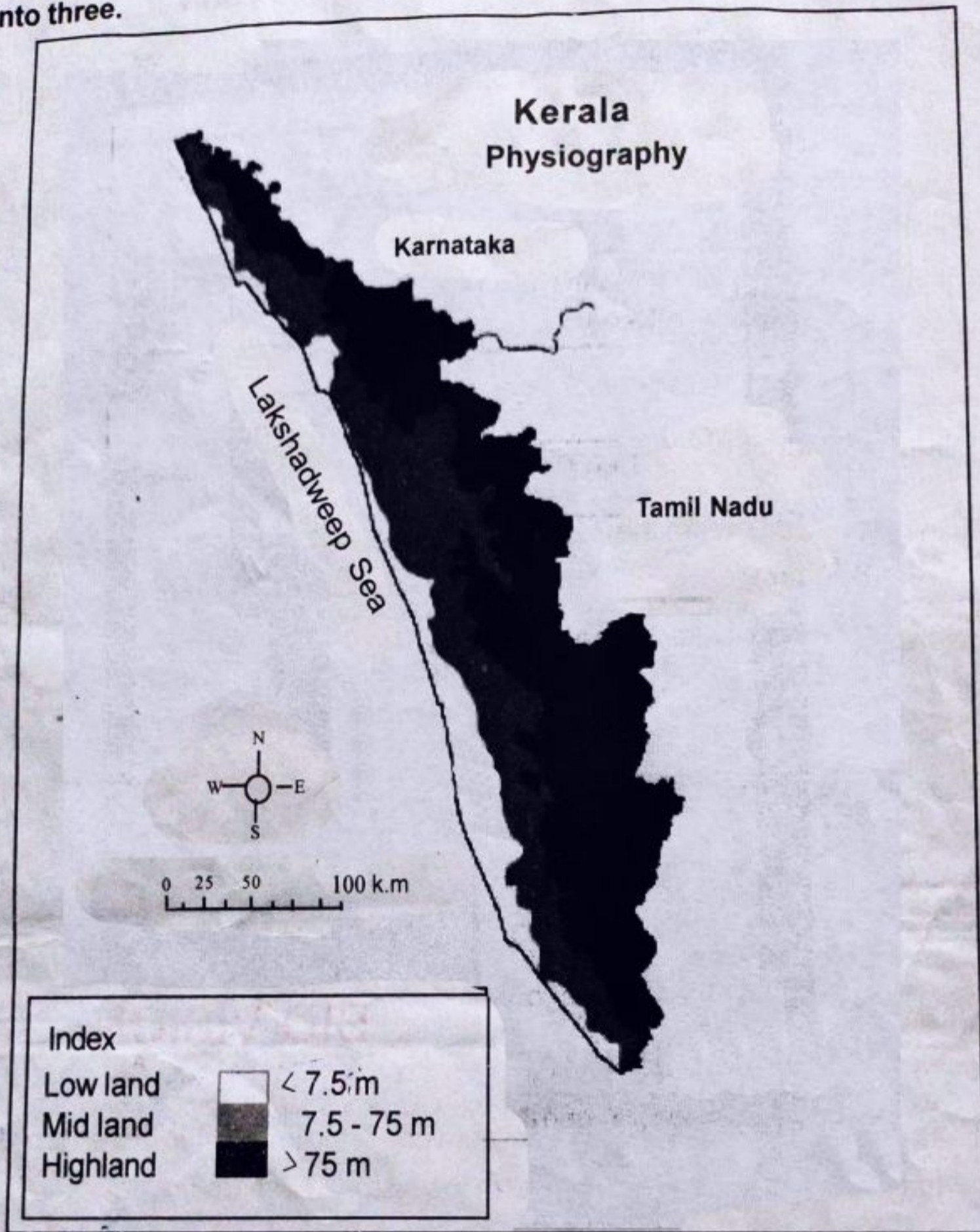
Activity 2

There will be peace in the kingdom only if different sections of people co-exist harmoniously. To ensure this in his empire Ashoka adopted the policy of 'Dhamma' (Dharma).

- A) Write down any four main ideals of Ashoka's policy of 'Dhamma' (Dharma)
- B) Which war caused Emperor Ashoka to accept Buddhism?

Activity 3

Based on the elevation from sea level, the physiography of Kerala can be divided into three.



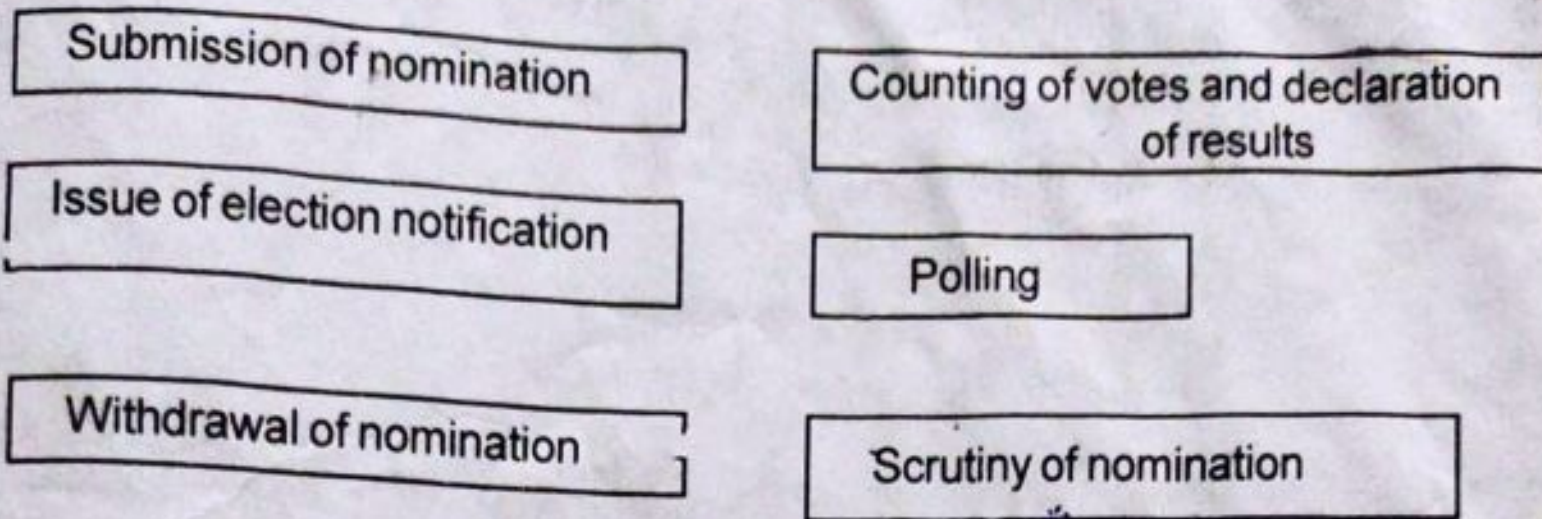
- A) Observe the outline and write down the region that includes the areas between an elevation of 7.5 meters and 75 meters above the sea level.
- B) Write down the features of different physiographical sections and complete the table.

Physiography i)	Physiography Lowland...
• Most of this region is forests.	This is a sandy tract.
ii).....	iii).....
• Approximately 75 meters elevation from sea level.	iv).....

Activity 4

15th Election to the Kerala Legislative Assembly were held on April 6, 2021.

A) Given below are the stages that must be followed during the election process in the correct order.



Stages of Election

- Issue of election notification
-
-
-
- Polling
-

B) What is the age to attain adult franchise for an Indian citizen?

Activity 5

Asia is a continent remarkable for its diverse geographical features.

A) What are the features of the Asian continent?

-
-
-
-

B) The highest peak in the world is on the Asian continent. Which is the peak?

Activity 6

The rivers, lakes and backwaters are closely related to the lives of Keralites.

A) Prepare a poster conveying the message 'Waterbodies are to be conserved'.

As a way of life Democracy upholds human values and individual liberty.

A) What is democracy?



B) How does the action given in the picture disrupt democratic process? Write your opinion.

Activity 8

India has a lot of diversities in language, dress, food habits, rituals and festivals.

A) Complete the table.

State	Festival
.....	Pongal
Assam
.....	Onam

B) Which are the major food grains of South India and North India?