

SSLC Mathematics Annual Paper Key

(02-04-2024)

By Radhika Polina
Little Hearts School, Home School Channel, com

I

1. c) 300

2. D) $\frac{c}{a}$

3. B) $\frac{4}{5}$

4. A) 1

5. A) MN

6. c) $\frac{1}{3}\pi(r_1^2 + r_2^2 + r_1 r_2)h$

7. B) 14

8. D) $\sqrt{3}$

II

9. $\frac{4}{9}$

10. 9 c units

11. $m=3, n=2$

12. One (or) Unique

13. $a_6 = 23$

14. degree = 3

15. two real & equal roots

16. $\theta = 30^\circ$

III

17. $\sqrt{2} = \frac{a-3b}{b}$

18. $x=3, y=2$

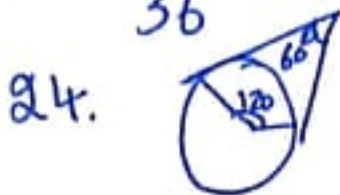
19. $g_{20} = 780$

20. $x = \frac{3 \pm \sqrt{17}}{4}$

21. Proof (or) Proof

22. P(1,1), Q(5,4), PQ = 5 units
(or)
P(7,3)

23. $\frac{27}{36}$



IV 25. $g(x) = x+4, \delta(x) = 7x+1$
(or)
 $g(x) = 8x-16$

26. Mean = 13 (or) Mode = 16

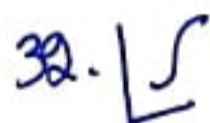
27. Proof (or) Proof

28. Theorem

29. $r = 21 \text{ cm}, \theta = 60^\circ$
(or)
122.28 cm^2

30. Son's age = 4 years
Mother's age = 32 years

31. $x = 6$
Area of quadrilateral = 28 cm^2



33. construction

V 34. $x=3, y=2$

35. $a_n = 1 = 39, a=3, d=4$
A.P is 3, 7, 11, 15, ...
 $a_{20} = 79$
(or)
 $72^\circ, 90^\circ, 108^\circ, 126^\circ, 144^\circ$

36. $AB = 10\sqrt{3} \text{ m}, AC = 20\sqrt{3} \text{ m}$

37. Theorem

38. $CSA = 6842 \text{ cm}^2$ & $Vol = 19404 \text{ cm}^3$