

I.D.B.I. SPECIALIST OFFICER EXAM 07

English Language

Directions (1-10) : Read the following passage carefully and answer the questions given below it. Certain words are given in **bold** to help you to locate them while answering some of the questions.

Though the last twenty five years have seen China double the world with its excellent economic performance, it has shied away from playing the kind of active role in international affairs that would seem commensurate with its economic weight. This is because traditionally China's politics have been defined by the need for economic development above all else. In the past, China's authorities have tended to downplay the country's international clout, choosing to stress instead its developing country status and limited military capabilities. Such modest rhetoric was intended to **allay** the fears that China's rise was causing across its immediate neighbourhood. That Beijing is finally acknowledging its status as a major player in the international system is evidenced by the fact that the President has formally developed a theory of international relations; the concept of harmonious world. The concept, **encompassing** broad notions of multilateralism, prosperity for all through common development and tolerance for diversity has left world opinion perplexed. There are commendable objectives but theory is short on specifics regarding the means to achieve them.

China's recent willingness to be a more active player internationally stems from complex factors. The country's economic strength—having acquired the largest foreign exchange reserves in the world—is undeniable and reports favour it to be the largest economy in the next quarter of a century. For **sustained** double-digit economic growth China thus has no choice but to become more active internationally. Moreover as a major proportion of oil and other natural resources that China needs to feed its growing economy are imported. Beijing has to aggressively woo the countries rich in energy resources, which also represent emerging markets for Chinese products. To ensure stable security environment within the region and thus facilitate economic growth. China played an active role in facilitating negotiations with North Korea. Destabilization of **potential** flashpoint like the Korean peninsula would lead to a flood of refugees crossing the border, interrupting careful plans of economic rejuvenation of China's North-East. China's growing influence has caused a shift in the geopolitical status quo and its influence is beginning to replace that of the United States and European powers in Africa. China's new diplomacy though has had its share of critics who have expressed their unease at China's military modernization programme and its willingness to deal with regimes widely condemned as corrupt and oppressive. Despite this when the Africa was in need of aid and infrastructure or the US needed help in negotiating with Korea they turned to China. By taking a lead in a variety of international and regional forums, initiating bilateral and military exchanges and dispensing aid and technical assistance in parts of the world where traditional powers are cautious to tread China has signaled that its days of sitting on the sidelines, content to let others shape world affairs are emphatically over.

1. Why has China traditionally been a passive spectator in global affairs?
 - a) To safeguard its oil resources
 - b) To maintain security in its vicinity
 - c) To conceal its economic predicament
 - d) To focus on domestic economic growth
 - e) Economic dominance of the US

2. Which of the following best describes China's current international status?
 - a) Cause of insecurity among developing nations
 - b) Largest economy in the world
 - c) Largest donor of aid to developing countries
 - d) Pioneer of implementing a "harmonious world" philosophy
 - e) None of these

3. What has been the fallout of China's increased participation in world affairs?
 - a) International scrutiny of its economic policies
 - b) Growth of corruption among its politicians
 - c) Its influence and prestige have grown substantially

- d) Its growth rate has stabilized
- e) None of these

4. On which of the following factors is China's economic growth dependent?
(A) Increased supply of oil and other natural resources to developed countries.
(B) Success of harmonious world policy.
(C) Political stability in Africa.

- a) Only (C)
- b) Only (A)
- c) Both (A) & (B)
- d) All (A), (B) & (C)
- e) None of these

5. Which of the following is TRUE in the context of the passage?

- a) China's current political standing internationally is disproportionate to its financial strength
- b) China is a reluctant participant in military dialogues
- c) The harmonious world theory is the only utilitarian remedy to the current challenges facing the world
- d) The us has recognized and acknowledged China's growing international reputation
- e) China has stopped dealing with corrupt countries because of international pressure

6. The main purpose behind Beijing's intervention in North Korea is to-

- a) ensure that the US acknowledges China's growing military influence
- b) prevent any hindrances to its domestic economic development programs
- c) protect its financial investment in neighboring countries
- d) provide humanitarian assistance to one of its strongest allies Korea
- e) None of these

7. Which of the following **CANNOT** be said about China's international relations theory?

- a) The theory is ambiguous in nature
- b) The theory reflects China's realization that it occupies a vital place in global affairs
- c) It promotes the .concept of common development for all nations
- d) It is a theory which explains China's sustained growth rate
- e) It emphasizes achieving prosperity through universal development

8. Which of the following is **NOT** a step taken by China to cement its role as a world leader?

- (A) Providing aid to countries when other nations are unwilling to do so.
 - (B) Curtailing its military modernization programme to reassure neighboring countries.
 - (C) Negotiating bilateral treaties only with countries with good human rights records.
- a) Only (A)
 - b) Both (A) & (B)
 - c) Both (B) & (C)
 - d) Only (B)
 - e) None of these

9. Which of the following is an outcome of Beijing's role in Africa?

- a) America's influence in the region has reduced
- b) Instability in the region
- c) The amount of aid from Europe and other countries has doubled
- d) The balance of power in Africa has shifted in favour of Europe over the US
- e) None of these

10. Which of the following is/are responsible for China's active international participation?

- (A) Rapid economic growth as a result of selling its surplus foreign exchange reserves

(B) The need to explore and expand to new markets

(C) The need to modernize its armed forces

- a) Only (A)
- b) Both (A) & (B)
- c) Only (B)
- d) Both (B) & (C)
- e) None of these

Directions (11-13) : Choose the word which is most similar in meaning to the word printed in **bold** as used in the passage.

11. **sustained**

- a) sporadic
- b) confirmed
- c) steady
- d) supported
- e) encouraging

12. **potential**

- a) promise
- b) talent
- c) opportunity
- d) capable
- e) possible

13. **encompassing**

- a) surrounding
- b) incorporating
- c) enveloping
- d) accepting
- e) dealing

Directions (14-15) : Choose the word which is most opposite in meaning to the word printed in **bold** as used in the passage.

14. **commendable**

- a) valuable
- b) unreliable
- c) undeserved
- d) unworthy
- e) deficient

15. **allay**

- a) strengthen
- b) alleviate
- c) grow
- d) expedite
- e) discourage

Directions (16-25): Which of the phrases a), b), c) and d) given below should replace the phrase given in **bold** in the following sentence to mark the sentence grammatically correct? If the sentence is correct as .it is and 'No correction is required', mark e) as the answer.

16. The executive had received several warning **before been suspended** finally for his lack of punctuality.

- a) after suspension
- b) after suspending
- c) before suspended
- d) before being suspended
- e) No correction required

17. **Accordingly** to the senior partner's instructions they have remitted the amount to your bankers.

- a) According on
- b) On accord of
- c) In accordance with
- d) Accordingly as
- e) No correction required

18. The museum **has planned** of a ten day exhibition showcasing the rich culture of the South.

- a) plan for
- b) has been planning
- c) planning on
- d) have a plan
- e) No correction required

19. Since the collapse of his business he has become **frequent depressed and addicted to** alcohol.

- a) frequent depression an addicted for
- b) frequently depress and addict to
- c) frequently depressing an addicted on
- d) frequently depressed and addicted to
- e) No correction required

20. The government will refrain from intervening **in the dispute except** the company requests it to do so.

- a) with the dispute except
- b) in the dispute unless
- c) to the dispute excepting
- d) in the dispute without
- e) No correction required

21. The issue of employee pension schemes **will come to** the Governing Board meeting next week.

- a) shall come about in
- b) will come before
- c) will come up at
- d) shall come to
- e) No correction required.

22. The steep rise in oil prices **is the reason on account of which** we must conserve energy.

- a) the reason
- b) the reason for
- c) the reason because
- d) the reason to
- e) No correction required

23. Several customers have requested that the branch timings on weekdays **should be changed** to reduce inconvenience.

- a) is changed
- b) have changed

- c) shall change
- d) can change
- e) No correction required

24. Having failed to plan their political campaign in advance the party members **got each other** into a mess.

- a) get one another
- b) got themselves
- c) have got anyone
- d) has got everyone
- e) No correction required

25. Despite his youth he has the reputation of being one **of the most efficient** administrators in the organization.

- a) from the efficient
- b) off the more efficient
- c) of the efficient in
- d) among the most efficiently of
- e) No correction required

Directions (26-30) : Read each sentence to find out whether there is any grammatical error in it. The error, if any, will be in one part of the sentence, the number of that part is the answer. If there is no error, mark e), (Ignore errors of punctuation, if any.)

26. Villagers want to build a) / a bridge crossed the river b) / to connect their village c) / to the highway. d) / No error e).

27. He has invited one a) / of his biggest a) allowed-legally business rivals b) / to his office c) / to discuss the merger. d) / No error. e)

28. To avoid any interruption a) / during the presentation b) / he checked all the system c) / the previous day. d) / No error. e)

29. It is the government a) / responsibility to provide athletes with the necessary facilities c) / for their training. d) / No error. e)

30. The management is a) / not willing to b) / makes no concession c) / to the employee's demands. d) / No error. e)

Directions (31 -35): In each of the following sentences there are two blank spaces. Below each sentence, there are five pairs of words denoted by numbers a), b), c), d) and e). Find out which pair of words can be filled up in the blanks in the sentence in the same sequence to mark the sentence meaningfully complete.

31. With the merger the newly formed company has come to _____ the country's _____ into a modern economy.

- a) lead- acceptance building.
- b) exemplify-transformation
- c) promote-development
- d) reflect- transfer
- e) stall-exchange

32. _____ governance does not encourage respect for authority and _____ the condition of the exploited.

- a) Frail-enhance
- b) Lack-recognizes
- c) Inadequate-heeds
- d) Weak-accentuates
- e) Effectual- alleviate

33. Although businesses are less _____ than they were before liberalization some parts of the economy remain _____ to restrictions.

- a) fettered-subject
- b) shunned-accessible
- c) ignored-vulnerable
- d) restrict-expose
- e) defunct-resistant

34. Today the city _____ free housing and hospitals and clean streets has become the _____ of the entire country.

- a) offers-example
- b) known-pride
- c) with-envy
- d) providing-challenge
- e) supplies- dream

35. Since its launch, the computer programme has _____ for two-thirds of all software sales _____.

- a) allowed-legally
- b) plans-globally
- c) provided-finally
- d) competed-demand
- e) accounted-domestically

Directions (36-40): Rearrange the following six sentences (A), (B), (C), (D), (E) and (F) in the proper sequence to form a meaningful paragraph; then answer the questions given below them.

(A) To address these issues Indian corporate are increasingly turning eco-friendly

(B) At present however there are only a dozen green buildings in the private sector.

(C) However through an eco-friendly building may cost more upfront however it is cost effective because of lower operating costs in the long run.

(D) Today there is growing concern about global warming, energy and water crises.

(E) The reason is the construction cost of an eco-friendly green building is 15% to 20% more than putting up a conventional building.

(F) Planting trees, suing energy saving lightning systems and constructing eco-friendly green buildings are some of the measures they are taking.

36. Which of the following will be the **FIRST** sentence after rearrangement?

- a) A
- b) B
- c) C
- d) D
- e) E

37. Which of the following will be the **SECOND** sentence after rearrangement?

- a) A
- b) C
- c) D
- d) E
- e) F

38. Which of the following will be the **THIRD** sentence after rearrangement?

- a) B
- b) D
- c) C

- d) E
- e) F

39. Which of the following will be the **FIFTH** sentence after rearrangement?

- a) C
- b) D
- c) E
- d) F
- e) A

40. Which of the following will be the **SIXTH (LAST)** sentence after rearrangement?

- a) B
- b) C
- c) D
- d) E
- e) F

Directions (41 -50): In the following passage, there are blanks, each of which has been numbered. These numbers are printed below the passage and against each, five words are suggested, one of which fits the blank appropriately. Find out the appropriate word in each case.

Mass migration has produced a huge worldwide economy of its own which has **(41)** so fast during the past few years that the figures have **(42)** experts. Last year remittances sent home by migrants were expected to **(43)** \$232 billion according to the World Bank which **(44)** these figures. **(45)** though the flow of remittances is to alleviate the plight of the migrant's family it cannot on its own lift entire nations out of poverty. Those who study the **(46)** of remittances argue that the money allows poor countries to put off basic decision of economic management like **(47)** their tax collection systems and building schools. Remittances to poor countries can also **(48)** the fact that they do not produce much at home. The challenge is now to find programs that **(49)** the benefits of remitted cash while **(50)** some of its downside.

41.

- a) accelerated
- b) grew
- c) expand
- d) increase
- e) escalating

42.

- a) strike
- b) encouraged
- c) astonished
- d) convinced
- e) disturb

43.

- a) rise
- b) represent
- c) project
- d) exceed
- e) recover

44.

- a) record
- b) tracks
- c) estimate

- d) report
- e) surveys

45.

- a) Detrimental
- b) Minor
- c) Profuse
- d) Benefited
- e) Vital

46.

- a) circumstance
- b) profit
- c) impact
- d) status
- e) quality

47.

- a) declaring
- b) established
- c) measuring
- d) reforming
- e) govern

48.

- a) mask
- b) hid
- c) review
- d) display
- e) supported

49.

- a) launch
- b) predict
- c) optimum
- d) appreciate
- e) maximize

50.

- a) augmenting
- b) avoiding
- c) suspend
- d) protects
- e) detracting

Quantitative Aptitude

Directions (51-55) : Study the following table carefully and answer the questions given below :

NUMBER OF STUDENTS PASSED AND FAILED IN FIVE CLASSES OF A SCHOOL OVER THE YEARS

YEAR	CLASSES									
	VI		VII		VIII		IX		X	
	PASS	FAIL	PASS	FAIL	PASS	FAIL	PASS	FAIL	PASS	FAIL
2001	50	42	76	14	58	18	65	17	48	23
2002	60	19	95	22	71	30	75	12	76	28
2003	45	13	61	19	49	15	48	08	74	20
2004	58	21	75	25	80	28	60	11	84	14
2005	55	18	66	29	59	26	70	13	65	17
2006	68	31	54	38	77	34	82	21	55	14

51. What is the average number of failed students from class VII for the given years?

- a) 29.5
- b) 27
- c) 26.5
- d) 25
- e) 24.5

52. What is the ratio between total number of passed students and total number of failed students for the year 2006?

- a) 2 : 1
- b) 56: 23
- c) 69:13
- d) 69: 35
- e) 336: 137

53. Which of the following classes has the maximum number of passed students, as compared to the total number of students of that class, over the years?

- a) VI
- b) VII
- c) VIII
- d) IX
- e) X

54. What is the number of passed students, for all the classes together, in the year 2003?

- a) 277
- b) 297
- c) 315
- d) 357
- e) 377

55. What is the total percentage of passed students of class VI from all the years together?

- a) 50
- b) 82
- c) 70
- d) 77
- e) 90

Directions (56-60) : Study the following Table carefully and answer the questions given below :

PERCENTAGE OF MARKS OBTAINED BY DIFFERENT STUDENTS IN DIFFERENT SUBJECTS

STUDENTS	SUBJECTS (Maximum Marks)						
	Hindi	English	Math	S.St.	Science	Marathi	Phy. Edu
	(150)	(150)	(150)	(150)	(75)	(50)	(75)
A	88	85	86	74	78	80	85
B	92	80	79	82	70	70	97
C	75	89	85	90	83	91	85
D	63	66	69	71	85	64	62
E	80	76	89	95	79	70	73
F	69	81	86	76	69	85	76

56. How many marks did E get in all the subjects together?

- a) 659
- b) 599
- c) 624
- d) 704
- e) 616

57. What are the average marks obtained by all the students together in English?

- a) 110.25
- b) 113.75
- c) 121.50
- d) 119.25
- e) 123.75

58. How many students have scored the highest marks in more than one subject?

- a) one
- b) two
- c) three
- d) four
- e) five

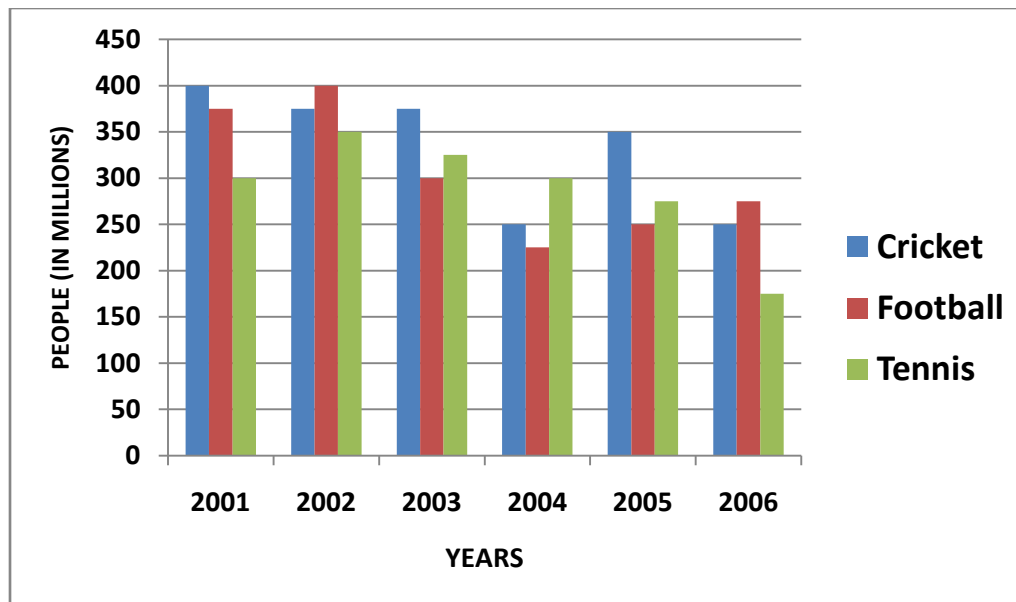
59. Who has scored the highest marks in all the subjects together?

- a) E
- b) C
- c) F
- d) A
- e) D

60. Marks obtained by F in S.St. are what percent of marks obtained by E in the same subject?

- a) 72
- b) 84
- c) 79
- d) 82
- e) 80

Directions (61-65) : Study the following Graph carefully and answer the questions given below :



61. In the year 2006, the people preferring to play Tennis is what percent of the people preferring to play Cricket, Football and Tennis together in that year?

- a) $25\frac{1}{2}$
- b) $24\frac{3}{4}$
- c) $21\frac{1}{3}$
- d) $22\frac{2}{5}$
- e) $23\frac{1}{3}$

62. From 2001 to 2006, the total number of people who preferred to play Football was how much (in millions)?

- a) 1500
- b) 1600
- c) 1700
- d) 1800
- e) 1900

63. The number of people preferring to play Tennis in 2006, is how many millions fewer than the number of people preferring to play Tennis in the year 2005?

- a) 110
- b) 105
- c) 100
- d) 95
- e) 90

64. What is the respective ratio of the number of people preferring to play Cricket to the number of people preferring to play Tennis in the year 2003?

- a) 14:17
- b) 15 : 13
- c) 15 : 11
- d) 13:15
- e) 17:14

65. How many people (in millions) have preferred to play Cricket in all the years together?

- a) 2050

- b) 2000
- c) 1850
- d) 1750
- e) 1600

Directions (66-75) : What should come in place of question mark (?) in the following questions?

66. $\frac{4}{7} * 2\frac{4}{5} \div \frac{2}{5} = ?$

- a) $\frac{6}{7}$
- b) 8
- c) $\frac{2}{5}$
- d) 4
- e) None of these

67. $(19.89)^2 - \sqrt{676} = ?$

- a) 369.6121
- b) 395.2161
- c) 359.2161
- d) 395.6161
- e) None of these

68. $-56 \times 61 + 89 = ?$

- a) -3237
- b) 3327
- c) -3327
- d) 3416
- e) None of these

69. $3625 * ? = 1450$

- a) $\frac{1}{3}$
- b) $\frac{2}{5}$
- c) $\frac{1}{5}$
- d) $\frac{4}{5}$
- e) None of these

70. $(0.85\% \text{ of } 405) + (2.25\% \text{ of } 550) = ?$

- a) 16.7175
- b) 15.7150
- c) 13.8175
- d) 14.7125
- e) None of these

71. $916 \times ? \times 3 = 214344$

- a) 78
- b) 68
- c) 84
- d) 66
- e) None of these

72. $(54679 + 5982 + 32614) - (312 \times 69) = ?$

- a) 71528

- b) 77147
- c) 71747
- d) 61757
- e) None of these

73. $\sqrt{?} = (88 \times 42) \div 16$

- a) 3696
- b) 39660
- c) 43163
- d) 53361
- e) None of these

74. $(42\% \text{ of } 4240) - (39\% \text{ of } 3854) = ?$

- a) 277.20
- b) 277.74
- c) 3283.86
- d) 3284.40
- e) None of these

75. $41 + 4.11 + 0.41 + 411 + 41.11 = ?$

- a) 456.63
- b) 487.63
- c) 456.52
- d) 479.63
- e) None of these

Directions (76-80) : What should come in place of question mark (?) in the following number series ?

76. 1 4 27 256 3125 46656 ?

- a) 117649
- b) 279936
- c) 705894
- d) 16807
- e) 823543

77. 30 46 78 126 190 270 ?

- a) 356
- b) 366
- c) 382
- d) 398
- e) 414

78. 380 465 557 656 762 875 ?

- a) 955
- b) 1015
- c) 975
- d) 995
- e) 1025

79. 1250 500 200 80 32 12.8 ?

- a) 5.12
- b) 6.4
- c) 4.3
- b) 6.4

e) 5.16

80. 23 26 24 27 25 28 ?

- a) 27
- b) 29
- c) 26
- d) 24
- e) 21

Directions (81-85) ∴ What approximate value should come in place of question mark (?) in the following questions ? (You are not expected to calculate the exact value.)

81. $(415.63)^2 = ?$

- a) 172850
- b) 172700
- c) 172750
- d) 172800
- e) 17225

82. $543911 \times 85 = ? \times 46465$

- a) 995
- b) 915
- c) 1005
- d) 955
- e) 1015

83. $\frac{5}{6} * \frac{2}{9} \div \frac{4}{9} \div \frac{6}{7} = ?$

- a) 0.44
- b) 0.32
- c) 0.49
- d) 0.36
- e) 0.40

84. $754.002 + 3.00024 \times 88.976 = ?$

- a) 66616
- b) 1021
- c) 1000
- d) 66600
- e) 1035

85. $\sqrt{727.9995} + (5.1961)^2 = ? \div \frac{2}{10.7960}$

- a) 53
- b) 44
- c) 5
- d) 15
- e) 10

86. If 5 workers collect 60 kg wheat in 3 days. How many kilograms of wheat will 8 workers collect in 5 days?

- a) 80 kg
- b) 100 kg
- c) 120 kg
- d) 160 kg

e) None Of these

87. By how much is $\frac{3}{4}$ th of 52 lesser than $\frac{2}{3}$ rd of 99?

- a) 27
- c) 39
- b) 33
- d) 66
- e) None of these

88. Which number should replace both the question marks in following equation?

$$\frac{?}{432} = \frac{48}{?}$$

- a) 141
- b) 143
- c) 145
- d) 147
- e) None of these

89. The average age of A, B and C is 26 years: If the average age of A & C is 29 years, what is the age of B in years?

- a) 26
- b) 20
- c) 29
- d) 23
- e) None of these

90. A sum of money is divided among A, B, C and D in the ratio of 3 : 5 : 8 : 9 respectively. If the share of D is Rs. 1,872/- more than the share of A, then what is the total amount of money of B & C together?

- a) Rs. 4,156/-
- b) Rs. 4,165/-
- c) Rs. 4,056/-
- d) Rs. 4,065/-
- e) None' of these

91. Arun started a business investing Rs. 38,000/-. After 5 months Bakul joined him with a capital of Rs.55,000/-. At the end of the year the total profit was Rs. 22,000/-. What is the **approximate** difference between the share of profits of Arun and Baku!?

- a) Rs. 1,192/-
- b) Rs. 1,856/-
- c) Rs. 1,007/-
- d) Rs. 1,928/-
- e) Rs. 1,568/-

92. What is the 40% of 50% of $\frac{3}{4}$ th of 3200?

- a) 480
- b) 560
- c) 420
- d) 600
- e) None of these

93. One-fourth of a number is 17. What will 45% of that number be?

- a) 51
- b) 45.4
- c) 37.4

- d) 30.6
- e) None of these

94. Ishan spent Rs. 35,645/- on buying a bike, Rs. 24,355/- on buying a television and the remaining 20% of the total amount he had as cash with him. What was the total amount?

- a) Rs. 60,000/-
- b) Rs. 72,000/-
- c) Rs. 75,000/-
- d) Rs. 80,000/-
- e) None of these

95. In how many different ways can the letters of the word 'PROBE' be arranged?

- a) 15
- b) 25
- c) 60
- d) 125
- e) None of these

96. In how many ways can a committee of 4 people be chosen out of 8 people?

- a) 110
- b) 32
- c) 70
- d) 126
- e) None of these

97. In how many ways can 6 people be seated on a sofa if there are only 3 seats available?

- a) 18
- b) 120
- c) 2
- d) 216
- e) None of these

98. The sum of three consecutive even numbers is 44 more than the average of these numbers. Which of the following is the third (largest) of these numbers?

- a) 16
- b) 18
- c) 24
- d) Cannot be determined
- e) None of these

99. In a class of 65 students, each student got sweets that are 20% of the total number of students. How many sweets were there?

- a) 635
- b) 845
- c) 955
- d) Cannot be determined
- e) None of these

100. If the numerator of a fraction is increased by 200% and the denominator is increased by 300%. The resultant fraction is $\frac{6}{11}$. What was the original fraction?

- a) $\frac{8}{11}$
- b) $\frac{5}{13}$

- c) $\frac{6}{17}$
- d) $\frac{17}{9}$
- e) None of these

Reasoning Ability

101. How many such pairs of letters are there in the word MEDICAL, each of which has many letters between them in the word as in the English alphabet?

- a) None
- b) One
- c) Two
- d) Three
- e) More than three

102. In a certain code MAIN is written as IMNA and GOAL is written as AGLO. How is DUSK written in that code?

- a) SDKU
- b) SUKD
- c) UKDS
- d) USKD
- e) None of these

103. Four of the following five are alike in a certain way and so form a group. Which is the one that does not belong to that group?

- a) Green
- b) Yellow
- c) Grey
- d) Red
- e) Blue

104. If it is possible to form a three-digit number which is the perfect square of a two-digit odd number with the third, the fifth and the eight digits of the number 532784691, which of the following will be the second digit of that two-digit odd number? If more than one such number can be formed, give @ as the answer and if no such number can be formed, give © as the answer.

- a) 1
- b) 7
- c) 9
- d) @
- e) ©

105. Four of the following five are alike in a certain way and so form a group. Which is the one that does not belong to that group?

- a) 12
- b) 24
- c) 42
- d) 18
- e) 32

106. How many such letters are there in the word CATEGORY, each of which is as far away from the beginning of the word as when they are arranged in alphabetical order?

- a) None
- b) One
- c) Two
- d) Three

e) More than three

107. In a certain code MISTAKEN is written as SRHLOFLB. How is GROUNDED written in that code?

- a) CDCMTNQF
- b) TNOFCDCM
- c) EFEOTNQF
- d) TNQFEFEO
- e) None of these

108. The position of the first and the fifth digits in the number 89123647 are interchanged. Similarly the positions of the second and the sixth digits are interchanged and so on. Which of the following will be the fourth digit from the right end after the rearrangement?

- a) 9
- b) 1
- c) 8
- d) 2
- e) None of these

109. If 'tree' means 'mountain'; 'mountain' means 'water'; 'water' means 'jungle'; 'jungle' means 'bus'; 'bus' means 'truck'; 'truck' means 'house'; then where do the fish live?

- a) water
- b) jungle
- c) mountain
- d) bus
- e) truck

110. In a certain code language 'nik ka pa' means 'who are you'; 'ka na ta da' means 'you may come here'; and 'ho ta sa' means 'come and go'; what does 'nik' mean in that code language ?

- a) who
- b) are
- c) who or are
- d) Data inadequate
- e) None of these

111. How many meaningful English words can be formed with the letters LESA, using each letter only once in each word?

- a) None
- b) One
- c) Two
- d) Three
- e) More than three

112. Pointing to a boy Neha said, 'He is the son of my grandfather's only child'. How is Neha -related to that boy?

- a) Sister
- b) Cousin
- c) Aunt
- d) Cannot be determined
- e) None of these

113. Four of the following five are alike in a certain way and so form a group. Which is the one that does not belong to that group?

- a) Iron
- b) Aluminium

- c) Copper
- d) Steel
- e) Porcelain

114. What should come next in the following letter sequence?

A A B A B C A B C D A B C D E A B C D E F A B C D E F G A B C D E F G

- a) A
- b) I
- c) H
- d) B
- e) None of these

115. In a certain code BEND is written as 5%7@ and DREAM .is written as @2%48. How is MADE written in that code?

- a) 84@%
- b) 8@4%
- c) 85@%
- d) 84%5
- e) None of these

Directions (116-118) : These questions are based on the following information.

- (i) 'P x Q' means 'P is brother of Q'.
- (ii) 'P ÷ Q' means 'Q is mother of P'.
- (iii) 'P - Q' means 'P is father of Q'.
- (iv) 'P + Q' means 'Q is sister of P'.

116. Which of the following means M is the daughter of T?

- a) $M + N \div J - T$
- b) $T - J \times R + M$
- c) $M - J \times T \div K$
- d) $M + W \times R \div T$
- e) None of these

117. How is related to R in the expression : $R \div T + K$?

- a) Daughter
- b) Sister
- c) Niece
- d) Cannot be determined
- e) None of these

118. Which of the following means D is the grandfather of W?

- a) $D - K \times T - W$
- b) $D \div K \times T \div W$
- c) $D - K \times T \div W$
- d) $D \div K \times T - W$
- e) None of these

Directions (119-121) : Following questions are based on the five three digit numbers given below :

517 394 823 976 465

119. If the positions of the first and the second digits in each of the above numbers are interchanged, which of the following will be the third digit of the highest number?

- a) 7
- b) 4

- c) 3
 - d) 6
 - e) 5
120. What is the difference between the middle digits of the highest and the lowest of the above five numbers?
- a) 2
 - b) 3
 - c) 4
 - d) 5
 - e) None of these
121. If the positions of the first and the third digits in each of the above five numbers are interchanged which of the following will be the middle digit of the second lowest number?
- a) 1
 - b) 2
 - c) 7
 - d) 9
 - e) 6

Directions (122-125) : Read the following information carefully and answer the questions given below :

P, Q, R, S, T, V and W are sitting around a circle facing at the centre. R is third to the right of V who is second to the right of P. T is second to the left of Q who is second to the left of W. V is sitting between S and W.

122. Who is to the immediate left of R?

- a) Q
- b) T
- c) P
- d) Data inadequate
- e) None of these

123. Who is third to the left of T?

- a) P
- b) S
- c) V
- d) W
- e) None of these

124. Who is sitting between T and V?

- a) None
- b) R
- c) S
- d) Data inadequate
- e) None of these

125. Who is sitting between R and W?

- a) Only Q
- b) Only P
- c) Only PT
- d) Data inadequate
- e) None of these

Directions (126-131) : Study the following arrangement carefully and answer the questions given below :

B 5 R 1 @ E K 4 F 7 © D A M 2 P 3 % 9 H I W 8 * 6 U J \$ V Q #

126. Which of the following is the seventh to the left of the seventeenth from the left end of the above arrangement?

- a) 7
- b) W
- c) *
- d) 4
- e) None of these

127. Which of the following is exactly in the middle between D and U in the above arrangement?

- a) %
- b) H
- c) 9
- d) 3
- e) None of these

128. Four of the following five are alike in a certain way based on their position in the above arrangement and so form a group. Which is the one that does not belong to that group?

- a) PM3
- b) KFE
- c) 6J*
- d) 15@
- e) 704

129. How many such symbols are there in the above arrangement each of which is immediately preceded by a number but not immediately followed by a consonant?

- a) None
- b) One
- c) Two
- d) Three
- e) More than three

130. How many such consonants are there in the above arrangement each of which is immediately followed by another consonant but not immediately preceded by a symbol?

- a) None
- b) One
- c) Two
- d) Three
- e) More than three

131. How many such consonants are there in the above arrangement each of which is either immediately preceded by consonant or immediately followed by a number or both?

- a) None
- b) One
- c) Two
- d) Three
- e) Four

Directions (132-137) : In each question below are given four statements followed by two conclusions numbered I and II. You have to take the given statements to be true even if they seem to be at variance from commonly known facts. Read all the conclusions and then decide which of the given conclusions logically follows from the given statements disregarding commonly known facts.

Give answer a) if only conclusion I follows

Give answer b) if only conclusion II follows

Give answer c) if either I or II follows

Give answer d) if neither I nor II follows.

Give answer e) if both I and II follow.

132. Statements :

Some shops are markets.

Some markets are huts.

Some huts are rooms.

Some rooms are buildings.

Conclusions :

I. Some buildings are huts.

II. Some rooms are markets.

133. Statements :

All cakes are breads.

Some breads are fruits.

Some fruits are biscuits.

All biscuits are snacks.

Conclusions:

I. Some snacks are fruits.

II. Some cakes are fruits.

134. Statements :

All beads are rings.

All poles are rings.

All rings are bangles.

All glasses are bangles.

Conclusions :

I. Some bangles are beads.

II. Some rings are poles.

135. Statements :

All vegetables are plants.

No plant is flower.

Some flowers are jungles.

All jungles are trees.

Conclusions :

I. Some trees are plants.

II. No plant is tree.

136. Statements :

Some knives are hammers.

All hammers are poles.

All poles are sticks.

Some sticks are pencils.

Conclusions :

I. Some hammers are pencils.

II. Some sticks are knives.

137. Statements :

All books are pens.

Some pens are desks.

Some desks are chairs.

Some chairs are tables:

Conclusions :

- I. Some tables are desks.
- II. Some chairs are pens.

Directions (138-144) : In each question below is given a group of letters followed by four combinations of digits/symbols numbered a), b), c) and d). You have to find out which of the combinations correctly represents the group of letters based on the following digit/symbol code of each letter and the conditions that follow and mark the number of that combination as your answer. If none of the combinations correctly represents the group of letters give e) i.e. 'None of these' as your answer.

Letter : P M E K R A T W 1 J U B F H N

Digit/Symbol : 5 6 # 2 \$ 8 % 1 © 7 @ 9 3 4 *

Conditions :

- (i) If both the first and the last letters in the group are vowels, both are to be coded as the code for the last letter.
- (ii) If both the first and the last letters in the group are consonants, both are to be coded as the code for the first letter.
- (iii) If the first letter in the group is a consonant and the last letter is a vowel codes for the first and the last letters are to be interchanged.

138. TMWEIKB

- a) %61 #©2%
- b) %61 #© 29
- c) 961 # © 29
- d) 961 # © 2%
- e) None of these

139. AHNRMUF

- a) 84*\$6@8
- b) 34*\$6@3
- c) 84*\$6@3
- d) 34*\$6@8
- e) None of these

140. BNAWJPI

- a) 9*8175©
- b) ©*18759
- c) *8175©
- d) ©*81759
- e) None of these

141. EPMNJKA

- a) #56*728
- b) 856*728
- c) #56*72#
- d) 85672*8
- e) None of these

142. JBRWIAH

- a) 79\$1©84
- b) 49\$1©84
- c) 49\$1©87
- d) 791\$8©7
- e) None of these

143. ITUHKRP

- a) ©%@42\$5
- b) ©%@42\$©
- c) 5%@42\$5
- d) 5%@42\$©
- e) None of these

144. NKBUFHI

- a) *29@34©
- b) *29@34*
- c) ©23@94*
- d) ©29@34*
- e) None of these

Directions (145-150) : In the following questions, the symbols @, ©, \$, % and 0 are used with the following meanings as illustrated below:

'P \$ Q' means 'P is not greater than Q'.

'P @ Q' means 'P is neither smaller than nor equal to Q'.

'P 0 Q' means 'P is neither greater than nor equal to Q'.

'P © Q' means 'P is neither greater than nor smaller Q'.

'P % Q' means 'P is not smaller than Q'.

In each of the following questions assuming the give statements to be true, find out *which* of the two conclusions I and II given below them is/are definitely true.

Give answer a) if only conclusion I is true.

Give answer b) if only conclusion II is true.

Give answer c) if either conclusion I or conclusion II is true.

Give answer d) if neither conclusion I nor conclusion II is true.

Give answer e) if both conclusions I and II are true.

145. Statements :

M 0 R, R \$ T, T © N

Conclusions :

I. N@M

II. T@M

146. Statements :

B% H, H\$W, W@M

Conclusions :

I. B@W

II. M 0 H

147. Statements :

K0M, M%A, A@T.

Conclusions:

I. K0A

II. T0M

148. Statements :

D \$ Z, Z % N, N @ F

Conclusions:

I. F 0Z

II. N \$D

149. Statements :

R@A, A%M, M ∂N

Conclusions :

I. M ∂ R

II. M@R

150. Statements :

J@ K, K \$ T, T © B

Conclusions:

I. B% K

II. J@T

ANSWERS

Q.1	D	Q.34	C	Q.67	A	Q.100	A
Q.2	D	Q.35	E	Q.68	C	Q.101	E
Q.3	C	Q.36	D	Q.69	B	Q.102	A
Q.4	E	Q.37	A	Q.70	E	Q.103	C
Q.5	D	Q.38	E	Q.71	A	Q.104	B
Q.6	B	Q.39	C	Q.72	C	Q.105	E
Q.7	A	Q.40	B	Q.73	D	Q.106	B
Q.8	C	Q.41	A	Q.74	B	Q.107	D
Q.9	A	Q.42	C	Q.75	E	Q.108	C
Q.10	C	Q.43	D	Q.76	E	Q.109	B
Q.11	B	Q.44	E	Q.77	B	Q.110	C
Q.12	D	Q.45	C	Q.78	D	Q.111	C
Q.13	B	Q.46	C	Q.79	A	Q.112	A
Q.14	D	Q.47	D	Q.80	C	Q.113	E
Q.15	C	Q.48	A	Q.81	C	Q.114	C
Q.16	D	Q.49	E	Q.82	A	Q.115	A
Q.17	C	Q.50	E	Q.83	C	Q.116	B
Q.18	E	Q.51	E	Q.84	B	Q.117	E
Q.19	D	Q.52	B	Q.85	E	Q.118	A
Q.20	B	Q.53	D	Q.86	D	Q.119	B
Q.21	C	Q.54	A	Q.87	A	Q.120	A
Q.22	E	Q.55	C	Q.88	E	Q.121	D
Q.23	E	Q.56	A	Q.89	B	Q.122	B
Q.24	B	Q.57	D	Q.90	C	Q.123	D
Q.25	E	Q.58	C	Q.91	B	Q.124	C
Q.26	B	Q.59	B	Q.92	A	Q.125	E
Q.27	C	Q.60	E	Q.93	D	Q.126	A
Q.28	C	Q.61	E	Q.94	C	Q.127	C
Q.29	A	Q.62	D	Q.95	E	Q.128	E
Q.30	C	Q.63	C	Q.96	C	Q.129	D
Q.31	B	Q.64	B	Q.97	B	Q.130	A
Q.32	E	Q.65	A	Q.98	C	Q.131	C
Q.33	C	Q.66	D	Q.99	B	Q.132	D

Q.133 A
Q.134 E
Q.135 C
Q.136 B
Q.137 D

Q.138 A
Q.139 C
Q.140 D
Q.141 B
Q.142 E

Q.143 A
Q.144 D
Q.145 E
Q.146 D
Q.147 B

Q.148 A
Q.149 C
Q.150 A