

IDBI BANK OFFICER EXAM 09

English Language

Directions (1 - 15) : Read the following passage carefully and answer the questions given below it. Certain words/phrases have been printed in **bold** to help you locate them while answering some of the questions.

As the price of gasoline spiked to record highs in 2007 and 2008, interest in alternatives to fossil fuels, and electric transportation in particular, also spiked. It raised however, many questions about the true environmental impact of electric cars.

The electric car is being upheld as an ethical, green, nifty and cheap alternative to the carbon dioxide-emitting automobiles clogging city roads around the world today. Though electric cars are not a popular choice, the industry's future plans are riding high on the hope that on improving certain factors, (which are currently deficient) such as, effective marketing, a growing public awareness of the need for clean air and the increase in demand, the prices would eventually be driven down.

However, battery powered vehicles may still fail to completely replace liquid fuel-fed ones but with more electric and hybrid vehicles on the road, there is greater scope for makeover in the way environment is impacted by the automobiles. However, if the power to charge the battery-operated vehicle is to be sourced from grids using conventional coal-fired power plants, the electric car wouldn't really be all that green. These would actually cause an increase in demand on the power plant's energy production causing them to produce more power and thus more pollution, unless greener ways of energy production are used. But as of now the bulk of the electricity used to charge the batteries of electric vehicles is generated by fossil fuel burning power stations and only 12% by the clean methods. Also the amount of energy used by coal fired power stations to create the electricity to recharge electric vehicles makes them half as efficient as diesel cars. Recent studies indicate that carbon emissions may reduce only by an insignificant level even if there is a sudden Surge in demand for electric cars.

Other factors making the rechargeable cars less include the amount of electricity lost in the journey between the coal fired power stations which generate it and the point where it recharges the car, and the energy lost by the faulty first-generation batteries and motors. The researchers calculated that of the energy burned in a power station, only a quarter reaches an electric car after leakages and losses along the supply chain, giving the vehicle an energy efficiency score of 24%. These amounts to more than 75% energy loss much before the car is even put on ignition: A modern diesel engine, by contrast, achieves 45% efficiency. This suggests that if fossil fuels are to be burned, it is much more efficient to do it within the engine of a vehicle rather than at a power station' and then try to send it via the National Grid, where a lot of energy is wasted, and finally to store it in a battery which in itself might leak power.

Electric cars may still survive since the cars emissions would be far less polluting than those that run on fossil fuels. 'With very minor emissions of sulphur caused when the batteries charge and discharge, when compared to current emissions standards, electric cars are zero emissions. The gasoline engine by comparison does not fare as well. Gasoline and diesel fuel burned in internal combustion engines for transportation-account for 54 percent of nitrites of oxygen, 89 percent of carbon monoxide and 28 percent of carbon dioxide pollution produced. **Switching** to electric vehicles drops those percentages to zero, and only **slightly** increases sulfur emissions. So even when the power plants burn dirty fuel, the amount of pollution is less than an oil burning car would create. **And this** picture is improving all the time, as clean energy sources are added to the grid.

The goal should be to make more electric cars with greater **incentives** for consumers and producers, as well as **feeding** grids with more power from renewable resources as per the objectives stated in the numerous plans on Climate Change. And till this goal is achieved, the debate whether controlling emission at a few power plants is more convenient than controlling emission at millions of tailpipes is, would continue.

1. Why does the author fear that the electric cars may eventually not be very eco-friendly?

- a) The exhausts of these cars emit as much pollutions as the oil fuelled cars.
- b) Electric cars though have lesser quantity of other emissions, the sulphur emissions will rise substantially, thus harming the environment.
- c) The electricity for charging the batteries of these cars comes from power plants using pollution causing fossil fuels.
- d) Only a) and c)
- e) None of these

2. What according to the author, needs to be done in order to make the electric cars more eco-friendly?

- a) Encouraging power plants to generate electricity using the eco-friendly methods.
- b) Setting certain emissions standards for electric cars is done for the oil consuming cars.
- c) Controlling sulphur emissions which are one of the major contributors to environmental pollution at present.
- d) Making, provisions for easy availability of recharging sockets at all the places.
- e) None of these

3. Which of the following suggestions does the author make in order to popularize the electric cars?

- a) Discontinue the use of fuel powered cars completely.
- b) Optimize the benefits of using electric cars to both consumers as well as the producers.
- c) To supply grids with renewable sources of energy for the production of electricity.
- d) Only b) and c)
- e) None of these

4. Why, according to the author, are electric cars not a popular option among the people?

- (A) The recharging points are not easily available everywhere.
- (B) Effective marketing of the eco-friendly cars has been lacking.
- (C) Lack of appreciation among the people for the need of unpolluted air.
- a) Only A and C
- b) Only B and C
- c) Only A and B
- d) All A, B and C
- e) None of these

5. Why, according to the author, may the electric cars survive despite all their current deficiencies?

- (A) Electric cars will be subsidized and this would prove to be cost efficient
- (B) An increasing number of grids are shifting to alternate forms of energy production.
- (C) In the future, incentives would be provided to those driving electric cars.
- (D) Pollution caused by the electric cars is far less as compared to the fossil fuel driven cars.
- a) Only A
- b) Only C and D
- c) Only B and D
- d) Only A and B
- e) None of these

6. Which of the following can be the most appropriate title for the given passage?

- a) The failure of the power grids.
- b) The rise and fall of cars using fossil fuels.
- c) The adverse effects of pollution caused by the power grids.
- d) The growing popularity of the electric cars.
- e) Why eco-friendliness of electric cars is a fiction at present.

7. Which of the following can be inferred from the given passage?

- a) Electric cars may completely replace the fossil fuel powered cars one day.
- b) Electric cars have brought about a drastic improvement in the pollution levels at present.
- c) Electric cars have universally been accepted as the environment friendly cars.
- d) All a), b) and c) are true.
- e) None of these

8. Which of the following is NOT TRUE in context of the given passage?

- a) Nearly three-fourth of the total energy generated for powering electric cars is wasted.
- b) The interest in electric cars increased during the last year when most of the power grids shifted to clean sources of fuel.
- c) Electric car engines do not produce any carbon emissions.

- d) There would not be any noticeable improvement in the pollution level if the oil burning cars are shifted to electric cars at present.
- e) None of these

9. Why, according to the author, is the efficiency of the electric cars low even to the buyers before they actually hit the roads?

- (A) A lot of energy is lost during the transit of electricity from the grid to the recharge point.
 - (B) The manufacturing cost of the electric cars is much higher than that of the other cars.
 - (C) The batteries and the motors of the electric cars are still relatively new and waste a lot of power.
- a) Only A and C
 - b) Only B and C
 - c) Only B
 - d) Only A and B
 - e) None of these

Directions (10-12) : Choose the word/group of words which is most similar in meaning to the word printed in **bold** as used in the passage.

10. **PICTURE**

- a) Situation
- b) Photograph
- c) Representation
- d) Art work
- e) Idea

11. **FEEDING**

- a) Eating
- b) Supplying
- c) Consuming
- d) Encouraging
- e) Nourishing

12. **SURGE**

- a) Alteration
- b) Modification
- c) Intensification
- d) Increase
- e) Evolution

Directions (13-15): Choose the word/group of words which is most opposite in meaning to the word printed in **bold** as used in the passage.

13. **SLIGHTLY**

- a) Adequately
- b) Miserly
- c) Certainly
- d) Remotely
- e) Substantially

14. **SWITCHING**

- a) Prolonging
- b) Withdrawing
- c) Continuing
- d) Exchanging
- e) Alternating

15. INCENTIVES

- a) Deterrents
- b) Preventions
- c) Disadvantages
- d) Prohibitions
- e) Liability

Directions (16-25) : Read each sentence to find out whether there is any grammatical error in it. The error, if any, will be in one part of the sentence. The number of that- part will be the answer. If there is no error, mark e) as the answer. (Ignore errors of punctuation, if any.)

16. Sheela had to travel all the way back a)/ when she remembered that b)/ she had forgot to take c)/ important document with her. d)/ No error e)
17. The party is holding a meeting a)/ in order to begin the b)/ painful and difficult process c)/ of rethink its political strategy. d)/ No error e)
18. The only bad thing about a)/ these flowers are the b)/ pollen which causes c)/ allergy in many people. d)/ No error e)
19. Nobody in the bus a)/ offered to give their seat b)/ to the elderly lady who had to c)/ travel a long distance. d)/ No error e)
20. This is the only organization a)/ which could somehow continue b)/ to making profits c)/ in the face of recession. d)/No error e)
21. Many more would have died a)/ if they hadn't received b)/ the timely helping from c)/ the relief team. d)/ No error e)
22. A man along with a)/ his wife and two children b)/ was rescued with the help c)/ of an army helicopter. d)/No error e)
23. In the past two decades, a)/ preventive measures have b)/ drastically reduced the c)/ occurrence of polio in children. d)/ No error e)
24. Neither the ministers a)/ nor the intelligence sources b)/ was aware of the coup c)/ being planned in the country. d)/ No error e)
25. Certain amounts of stress a)/at work is natural but b)/ it is important that one learns c)/ to keep it in the right proportion. d)/ No error e)

Directions (26-30) : Which of the phrases a), b), c) and d) given below each statement should replace the phrase printed in **bold** in the sentence to make it grammatically correct? If the sentence is correct as it is given and 'no correction is required, mark e) as the answer.

26. An NQO is working towards providing free education to the girl child so that every girl **can stand on their own** feet.
a) stands on their own
b) stand on her own
c) stand in her own
d) stand on their own's
e) No correction required
27. The animal rescuers anesthetized the dog **which had been with** great pain after having met with an accident?
a) which had been in

- b) which is being with
- c) who had been in
- d) who has been at
- e) No correction required

28. In its final decision, the court ruled that all the **allegations leveled for the** accused were false and baseless.

- a) allegation leveled against the
- b) allegations level against that
- c) allegations leveled against the
- d) allegation leveled with that
- e) No correction required

29. If **I leave early** from home, I could have made it on time to the airport.

- a) If I would leave early
- b) Had I leave earlier
- c) If I could left early
- d) Had I left earlier
- e) No correction required

30. Thousands of fire-fighters were deployed **at the factory when** a fire suddenly broke out due to a short circuit.

- a) on the factory when
- b) at the factory while
- c) at that factory when
- d) in the factory while
- e) No correction required

Directions (31-35) : Rearrange the following sentences (A), (B), (C), (D), (E) and (F) to make a meaningful paragraph and then answer the questions which follow.

- (A) This decision on which force is to be maximized lies with every individual.
- (B) This belief comes from the fact that science reflects the social forces prevailing at a particular time.
- (C) We must maximize the constructive forces of science and the destructive ones should be minimized.
- (D) Contrary to popular belief, the greatest enemy of mankind is not science but war.
- (E) She/he must understand that science can only help us in providing ways to reach at either war or peace and is actually not responsible for causing these.
- (F) During peaceful times science is constructive and during war, science is perverted to destructive ends.

31. Which of the following sentence should be the **SIXTH (LAST)** after rearrangement?

- a) A
- b) B
- c) C
- d) D
- e) E

32. Which of the following sentence should be the **THIRD** after rearrangement?

- a) A
- b) E
- c) F
- d) D
- e) C

33. Which of the following sentence should be the **FIFTH** after rearrangement?

- a) A
- b) B

- c) C
- d) E
- e) F

34. Which of the following sentence should be the **FIRST** after rearrangement?

- a) A
- b) B
- c) C
- d) D
- e) E

35. Which of the following sentence should be the **SECOND** after rearrangement?

- a) A
- b) B
- c) D
- d) E
- e) F

Directions (36-45) : In the following passage there are blanks, each of which has been numbered. These numbers are printed below the passage and against each, five words/phrases are suggested, one of which fits the blank appropriately. Find out the appropriate word/phrase in each case.

Asteroids are rocks and debris which are leftovers of the construction of our solar system. Most are in a belt, which **(36)** between Mars and Jupiter. However the gravitational influence of the giant planets, like Jupiter, or an impact by a comet can knock these large rocks out of their orbit, thus hurling them **(37)** the Earth. Many bodies have struck Earth in the **(38)**, and a widely accepted theory blames the impact of an asteroid for the extinction of dinosaurs about 65 million years ago. The scale of such a disaster can be understood by the example of a relatively small-size asteroid strike in Siberia in early 20th century which **(39)** more than half a million acres of forest.

However, what relieves the common man of the **(40)** regarding asteroid impact is the fact that many scientific groups are dedicated towards tracking the asteroid paths and orbit all around the year. With advanced equipments and technology, they can predict any upcoming danger much in **(41)**. According to them the chances of finding such an asteroid crossing Earth in this or the next five generation's lifetime is only one in thousands. Even if such an asteroid is found out, there will be **(42)** of time to track it, measure its orbit precisely, and plan a system for **(43)** it from its orbit away from that of the Earth's. There will be no great hurry, and no great panic. It would be a project for all the world's nations to take part in. It could be a globally unifying event. Because it will be **(44)** long before it actually hits the Earth. It probably would take only a small measure such as chemical rockets, or perhaps an atomic explosion to divert it from a threatening path.

Thus, in short, it can be said that though the impact would pose enormous risk to all living forms on Earth, the odds of it occurring within our lifetimes is very **(45)** and it is unnecessary to run around believing that the sky is falling.

36.

- a) rotates
- b) appears
- c) strikes
- d) encircles
- e) exists

37.

- a) past
- b) around
- c) towards
- d) against
- e) inside

38.

- a) future
- b) centuries
- c) earliest
- d) past
- e) history

39.

- a) extinct
- b) devastated
- c) wasted
- d) shriveled
- e) fell

40.

- a) apprehension
- b) expectation
- c) distrust
- d) sufferings
- e) hesitation

41.

- a) sooner
- b) accuracy
- c) advance
- d) time
- e) distance

42.

- a) dearth
- b) loss
- c) most
- d) lack
- e) plenty

43.

- a) blocking
- b) deflecting
- c) avoiding
- d) destroying
- e) changing

44.

- a) experienced
- b) harmful
- c) perceived
- d) noticed
- e) devastating

45.

- a) low
- d) noticed
- c) narrow

- d) high
- e) few

Directions (46-50) : Each question below has two blanks, each blank indicating that something has been omitted-. Choose the set of words for each blank that best fits the meaning of the sentence as a whole.

46. After having been friends for more than a decade, they had a _____ last year and have not _____ each other ever since.

- a) fight, talked
- b) argument, met
- c) dispute, seen
- d) quarrel, admired
- e) difference, introduced

47. The workers, several of _____ had complained about their low wages earlier have now _____ to move the court for the labour rights.

- a) who, indicated
- b) whom, decided
- c) which, threatened
- d) them, resolved
- e) number, warned

48. The hutment dwellers were jubilant when the government _____ an apartment to each of them at _____ rates.

- a) demolished, fast
- b) announced, less
- c) provided, high
- d) acquired, low
- e) promised, subsidized

49. The organization was deeply _____ by difficulties a decade ago but the new CEO brought many _____ changes in it and took it to a new high.

- a) indebted, necessary
- b) plagued, vital
- c) coping, more
- d) hurt, critical
- e) shaken, inevitable

50. The prime minister who is _____ in his holiday home at the moment said that he was very _____ by the news of India winning the world cup.

- a) visiting, happy
- b) residing, obliged
- c) intruding, dejected
- d) staying, pleased
- e) resting, cheerful

Quantitative Aptitude

Directions (51-55) : What should come in place of question mark (?) in the following questions?

51. $12\% \text{ of } 450 + ?\% \text{ of } 200 = 83$

- a) 13 .5
- b) 16
- c) 14.5

- d) 15
- e) None of these

52. $4854 \div ? \div 4 = 48.54$

- a) 25
- b) 16
- c) 32
- d) 15
- e) None of these

53. $14.4 \times 16.5 \times 8 = ?$

- a) 1908.0
- b) 1900.8
- c) 1912.4
- d) 1924.8
- e) None of these

54. $726.34 + 888.12 - ? = 1001.88$

- a) 621.58
- b) 602.64
- c) 654.54
- d) 618.78
- e) None of these

55. $\sqrt{2809} = ?$

- a) 43
- b) 47
- c) 57
- d) 53
- e) None of these

Directions (56-60) What approximate value should come in place of the question mark (?) in the following questions (Note : You are not expected to calculate the exact value.)

56. $(37.001)^2 = ?$

- a) 1560
- b) 1030
- c) 1240
- d) 1480
- e) 1370

57. $1011.11 + 110.1 + 111.01 = ?$

- a) 1230
- b) 1300
- c) 1150
- d) 1070
- e) 1390

58. 12.005% of 624.999 = ?

- a) 91
- b) 58
- c) 62
- d) 87

e) 75

59. $16.007 \times 14.995 \times 6.080 = ?$

- a) 1510
- b) 1440
- c) 1200
- d) 1350
- e) 1250

60. $7000.001 \div 699.983 \times 4.020 = ?$

- a) 58
- b) 32
- c) 60
- d) 40
- e) 25

Directions (61-65) :- What should come in place-of the question mark(?) in the following number series?

61. 9 62 ? 1854 7415 22244

- a) 433
- b) 309
- c) 406
- d) 371
- e) None of these

62. 4 8 24 60 ? 224

- a) 178
- b) 96
- c) 109
- d) 141
- e) None of these

63. 8000 1600 320 64 12.8 ?

- a) 2.56
- b) 3.5
- c) 3.2
- d) 2.98
- e) None of these

64. 6 9 | 5 27 5 | ?

- a) 84
- b) 99
- c) 123
- d) 75
- e) None of these

65. 7 8. 18 ? 232 1165

- a) 84
- b) 42
- c) 57
- d) 36
- e) None of these

66. If the compound interest accrued on an amount of Rs. 14, 600/- in two years is Rs. 4676.25, what is the rate of interest p.c.p.a.?

- a) 11
- b) 9
- c) 15
- d) 18
- e) None of these

67. Three friends A, B and C start running around a circular stadium and complete a single round in 24, 36 and 30 seconds respectively. After how many minutes will they meet again at the starting point?

- a) 12
- b) 6
- c) 8
- d) 15
- e) 18

68. If the perimeter of a square is equal to the radius of a circle whose area is 39424 Sq.cms., what is the area of the square?

- a) 1225 Sq.cms.
- b) 441 Sq.cms.
- c) 784 Sq.cms.
- d) Cannot be determined
- e) None of these

Directions (69-70) : Study the following information carefully to answer the questions that follow :

A committee of five members is to be formed out of 5 Professors, 6 Teachers and 3 Readers. In how many different ways can it be done if-

69. The committee should consist of 2 Professors, 2 Teachers and 1 Readers?

- a) 450
- b) 225
- c) 55
- d) 90
- e) None of these

70. The committee should include all the 3 Readers?

- a) 90
- b) 180
- c) 21
- d) 55
- e) None of these

71. Twelve men complete a piece of work in 24 days. In how many days can eight men complete the same piece of work?

- a) 28
- b) 36
- c) 48
- d) 52
- e) None of these

72. Rahul spends 5.0% of his monthly income on household items, 20% of his monthly income on buying clothes, 5% of his monthly income on medicines and the remaining amount of Rs. 11,250/- he saves. What is Rahul's monthly income?

- a) Rs. 38,200/-

- b) Rs. 34,000/-
- c) Rs. 41,600/-
- d) Rs. 45,000/-
- e) None of these

73. The number obtained by interchanging the two digits of a two digit number is less than the original number by 54. If the sum of the two digits of the number is 12, then what is the original number?

- a) 28
- b) 39
- c) 82
- d) Cannot be determined
- e) None of these

74. At present Meena is eight times her daughter's age. Eight years from now, the ration of the ages of Meena and her daughter will be 10 : 3 respectively. What is Meena's present age?

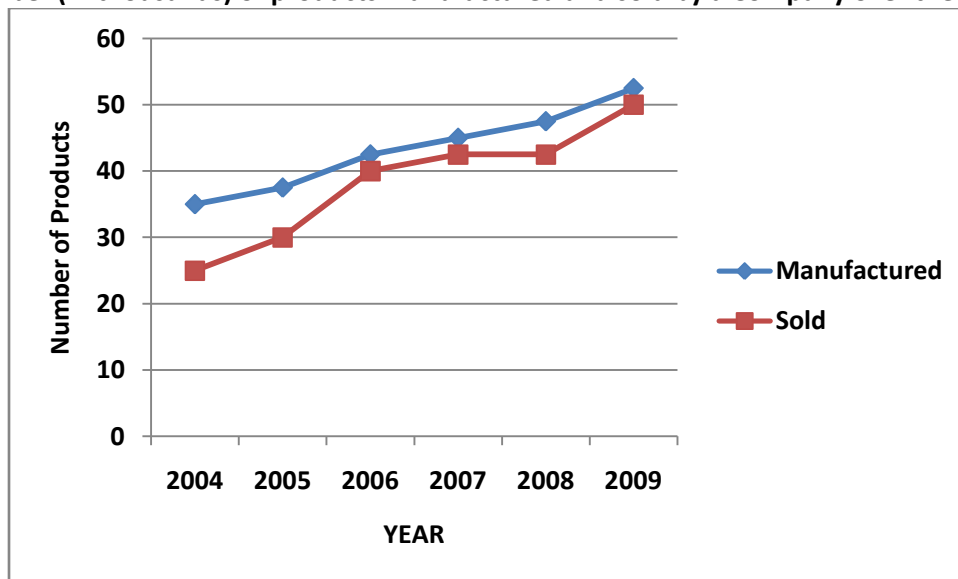
- a) 32 years
- b) 40 years
- c) 36 years
- d) Cannot be determined
- e) None of these

75. In how many different ways can 4 boys and 3 girls be arranged in a row such that all the boys stand together and all the girls stand together?

- a) 75
- b) 576
- c) 288
- d) 24
- e) None of these

Directions (76 - 80) : Study the following graph carefully to answer the questions :

Number (In thousands) of products manufactured and sold by a Company over the years



76. What is the difference in the number of products manufactured by the Company in the years 2009 and 2008?

- a) 4000
- b) 5500
- c) 3500
- d) 4500
- e) None of these

77. The number of products sold by the company in the year 2004 is what per cent of the number of products manufactured by it in that year? (rounded off to two digits after decimal)

- a) 71.43
- b) 67.51
- c) 81.67
- d) 56.29
- e) None of these

78. What is the percent increase in the number of products sold by the company in the year 2006 from the previous year? (rounded off to two digits after decimal)

- a) 19.25
- b) 33.33
- c) 10.45
- d) 42.66
- e) None of these

79. What is the respective ratio of the number of products not sold by the company in the year 2007 to those not sold in the year 2005?

- a) 3:1
- b) 6:5
- c) 1:3
- d) 5:6
- e) None of these

80. What is the approximate average number of products manufactured by the company over all the years together?

- a) 36550
- b) 39480
- c) 41220
- d) 43330
- e) 34420

Directions (81-85) : Study the following information -carefully and answer the questions that follow :

An office consists of 520 employees working in different departments, viz. HR, IT, Production and Marketing. The ratio of men to women in the organization is 5 : 3 respectively. 20 percent of the- men work in the IT department. 40 percent of the women work in the HR department. The total number of employees in the Production department is 135. Two-fifth of the women work in the IT department and the remaining work in the Marketing department. 40 percent of the men work in the Production department. Four percent of the men work in the "HR department and the remaining work in the Marketing department.

81. Number of men working in the Marketing department forms what percent of the total number of employees in the organization?

- a) 22.5
- b) 34.5
- c) 19.5
- d) 38.5
- e) None of these

82. What is the respective ratio of the number of men working in the HR department to the women working in the same?

- a) 1:5
- b) 2:3
- c) 4:7

- d) 9:11
- e) None of these

83. What is the number of women working in the Marketing department?

- a) 41
- b) 34
- c) 46
- d) 39
- e) None of these

84. Total number of employees working in the Production department forms approximately what percent of the total number of employees working in the organization?

- a) 12
- b) 17
- c) 21
- d) 26
- e) 38

85. What is the total number of employees working in the IT department?

- a) 130
- b) 124
- c) 143
- d) 101
- e) None of these

Directions (86-90): Study the following table carefully to answer the questions that follow

Number of Executives recruited by Six different organizations over the years

Organization	P	Q	R	S	T	U
Year						
2004	458	512	418	502	476	492
2005	522	536	472	500	482	523
2006	480	495	464	508	488	518
2007	506	505	428	444	490	534
2008	427	485	422	512	510	498
2009	492	488	444	499	512	510

86. What is the total number of Executives recruited by all the organizations together in the year 2006?

- a) 2927
- b) 3042
- c) 2864
- d) 3143
- e) None of these

87. What is the respective ratio of total number of Executives recruited by organization U in the years 2007 and 2009 together to the total number of Executives recruited by organization P from the same years?

- a) 436:517
- b) 499: 522
- c) 517:436
- d) 522:499
- e) None of these

88. What is the average number of Executives recruited by organization S over all the years together? (rounded off to the nearest integer)

- a) 494
- b) 482
- c) 514
- d) 506
- e) 478

89. What is the percent increase in the number of Executives recruited by organization R in 2005 from the previous year? (rounded off to two digits after decimal)

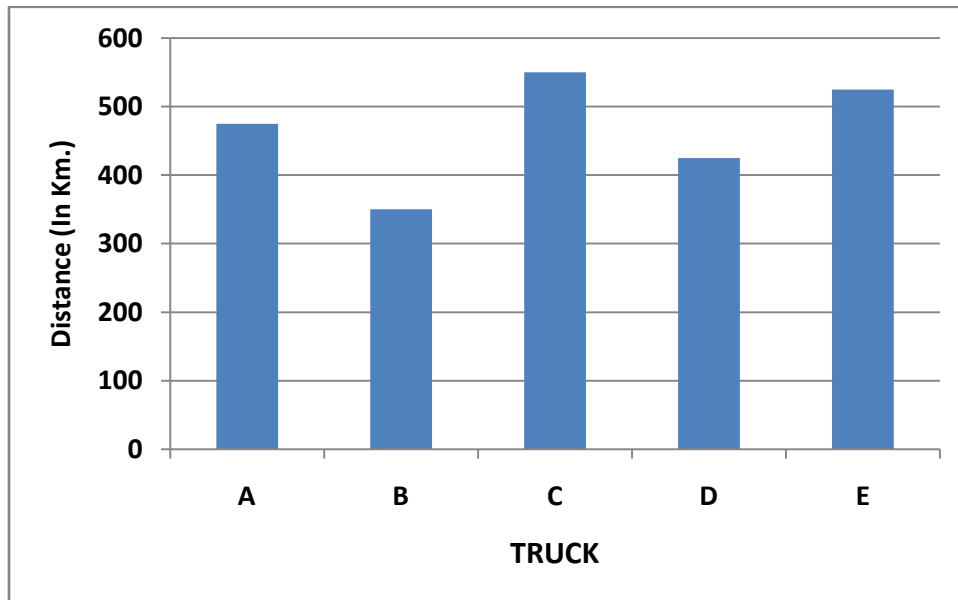
- a) 18.67
- b) 12.92
- c) 16.48
- d) 13.21
- e) None of these

90. Number of Executives recruited by organization T in the year 2008 forms approximately what percent of the total number of Executives recruited by all the organizations together in that year?

- a) 11
- b) 31
- c) 18
- d) 26
- e) 23

Directions (91 - 95) : Study the following graph and answer the following questions that follow :

Distance (In Km.) travelled by Five different trucks in a day



91. What is the respective ratio of the distance travelled by Truck A to the distance travelled by Truck D?

- a) 17:19
- b) 11:15
- c) 19:17
- d) 15:11
- e) None of these

92. What is the average distance travelled by all the Trucks together?

- a) 510 Km.
- b) 515 Km.
- c) 425 Km.
- d) 475 Km.
- e) None of these

93. If Truck A covered the given distance at the average speed of 47.5 Km/hr. what was the time taken by it to cover this distance?

- a) 12 hours
- b) 10 hours
- c) 8 hours
- d) 6 hours
- e) None of these

94. The distance travelled by Truck E is approximately what percent of the total distance travelled by Trucks B and C together?

- a) 58
- b) 60
- c) 52
- d) 62
- e) 55

95. If the time taken by Truck C to cover the given distance was 8 hours, what was the average speed of the truck?

- a) 54.75 Km./hr.
- b) 65.25 Km./hr.
- c) 52.25 Km./hr.
- d) 68.75 Km./hr.
- e) None of these

Directions (96-100) : Study the following table carefully to answer the questions that follow :

**TOTAL NUMBER OF. PEOPLE IN DIFFERENT VILLAGES AND
(OF THESE) PERCENTAGE OF MEN, WOMEN AND CHILDREN**

Village	Total No. of People	Percentage of Men	Percentage of Women	Percentage of Children
L	1240	35	45	20
M	2140	45	30	25
N	1450	50	30	20
O	1680	65	20	15
P	2060	40	40	20
Q	1990	40	50	10

96. Which village has the least number of children?

- a) L
- b) N
- c) Q
- d) O
- e) None of these

97. What is the respective ratio of the number of women in Villages L and P together to the number of men in the same villages together?

- a) 617:664
- b) 629:691
- c) 664: 617

- d) 691:629
- e) None of these

98. What is the total number of women and children together in Village Q?

- a) 995
- b) 1184
- c) 1086
- d) 988
- e) None of these

99. The total number of people from Village O is approximately what percent of the total number of people from all the Villages together?

- a) 16
- b) 21
- c) 11
- d) 25
- e) 9

100. What is the total number of children from Villages M and N together?

- a) 785
- b) 825
- c) 855
- d) 795
- e) None of these

Reasoning Ability

101. If 'M' denotes '+', 'N' denotes '÷', R' denotes '-' and Q denotes 'x' then- $15 M 12 Q 5 R 40 N 8 = ?$

- a) 70
- b) 130
- c) 45
- d) 60
- e) None of these

102. How many meaningful English words can be formed using the third, fifth, ninth and eleventh letters of the word 'COMMANDMENT' using each letter only once?

- a) None
- b) One
- c) Two
- d) Three
- e) More than three

103. Seema correctly remembers that she took leave after 21st October and before 27th October. Her colleague Rita took leave on 23rd October but Seema was present on that day. If 24th October was a public holiday and 26th October was Sunday, on which day in October did Seema take leave?

- a) 22nd October
- b) 25th October
- c) 22nd or 25th October
- d) Data Inadequate
- e) None of these

Directions (104-105): The following questions are based on the five three letter words given below.

PUN SAD CRY FOE STY

If each of the words is rearranged in alphabetical order then -

104. If it is possible to make only one meaningful English word using each letter only once, from the first letters of each of the five words after the letters of each word are rearranged in alphabetical order, the last letter of that word is your answer. If more than one word can be formed, 'X' is the answer and if no such word can be formed then 'W' is the answer.

- a) E
- b) N
- c) X
- d) W
- e) S

105. How many words will remain unchanged even after their rearrangement in alphabetical order?

- a) None
- b) One
- c) Two
- d) Three
- e) More than three

106. How many pairs of letters are there in the word 'VERIFIED' each of which has as many letters between them in the word as in the English alphabet?

- a) None
- b) One
- c) Two
- d) Three
- e) More than three

107. The fare paying capacity of people who travel on routes connecting to small towns is very low. Most successful airlines which operate in such regions have a large number of seats. Which of the following can be inferred from the above information?

- a) Regional airlines are quite profitable.
- b) People from cities are increasingly travelling to small towns.
- c) Regional airlines have to charge low fares in order to be profitable.
- d) The number of people travelling from small towns to cities is massive
- e) None of these

108. If 'A x D' means 'A is the sister of D', 'A+ D' means 'D is the daughter of A' and 'A- D' means 'A is the mother of D', then how will N is the aunt of M be denoted?

- a) $M + L N$
- b) $M \div L + N$
- c) $L \times N - 7 \div M$
- d) $N \times L \div M$
- e) None of these

109. M earns more than X and less than T. V earns more than M and T. R earns more than only X. Who earns the least among the five of them?

- a) X
- b) V
- c) M
- d) Cannot be determined
- e) None of these

110. The Court has stayed proceedings against the stockbroker. He can now return to the country. Which of the following can be **assumed** from the given information?

- a) The stockbroker is innocent.

- b) The police cannot arrest the stockbroker.
- c) The judge has been bribed.
- d) Complaints filed against the stockbroker have been withdrawn.
- e) None of these

Directions (111-115) : Read the following passage carefully and answer the questions given below it.

A, B, C, D, E, F, G and H are sitting around a circular table, facing the centre. A sits third to the left of C and second to the right of E. B sits second to the right of D who is not an immediate neighbour of E. H sits second to the left of F. G is not an immediate neighbour of D.

111. Which of the following pairs has only person sitting between them, if the counting is done in clockwise direction?

- a) F, G
- b) H, G
- c) H, C
- d) H, B
- e) None of these

112. Who sits third to the right of E?

- a) D
- b) G
- c) F
- d) B
- e) None of these

113. What is the position of G with respect to A's position?

- a) Immediately to the right
- b) Second to the left
- c) Third to the right
- d) Third to the left
- e) Fourth to the right

114. Who sits between E and A?

- a) F
- b) D
- c) G
- d) B
- e) None of these

115. Starting from A's position, if all the eight are arranged in alphabetical order in clockwise direction, the seating position of how many members (excluding A) would-remain unchanged?

- a) None
- b) One
- c) Two
- d) Three
- e) Four

Directions (116-123): In each of the questions below are given four statements followed by four conclusions numbered I, II, III and IV. You have to take the given statements to be true even if they seem to be at variance from commonly known facts. Read all the conclusions and then decide which of the given conclusions logically follows from the given statements disregarding commonly known facts.

116. Statements: Some Stoves are ovens.
All ovens are cylinders.

Some engines are stoves.

Some metals are cylinders.

Conclusions:

I. Some ovens are metals

II. Some cylinders are stoves.

III. Some ovens are engines.

IV. No engine is cylinder.

a) None follows

b) Only II and IV follow

c) Only II and III follow

d) Only III follow

e) Only II follows

117. Statements:

Some cars are buses

Some buses are trains.

All aero planes are trains.

All trucks are buses.

Conclusions:

I. Some aero planes are trucks.

II. Some cars are trains.

III. Some trucks are aero planes.

IV. No truck is train.

a) None follows

b) Only II and IV follow

c) Only III and IV follow

d) Only I and III follow

e) None of these

118. Statements:

Some tools are hammers.

All tools are trees.

Some trees are flowers.

No hammer is flower.

Conclusions:

I. All hammers are tools

II. No tool is flower.

III. Some hammers are trees.

IV. Some flowers are tools

a) None follows

b) Only I and either II or IV follow

c) Only II and IV follow

d) Only III follows

e) None of these

119. Statements:

Some bags are pockets.

Some pockets are trousers

All skirts are pockets.

Some belts are bags.

Conclusions:

I. Some trousers are belts.

II. Some skirts are bags.

- III. No trouser is belt.
- IV. Some skirts are trousers.
- a) All follow
- b) Only II and IV follow
- c) Only III follows
- d) Only either I or III follows
- e) None of these

120. Statements:

Some cats are tigers.

All lions are cats:

Some horses are lions.

All horses are animals.

Conclusions:

I. Some lions are tigers.

II. No horse is tiger.

III. Some horses are cats.

IV. Some horses are tigers.

- a) None follows
- b) Only III follows
- c) Only II and IV follow
- d) Only III and either II or IV follow
- e) None of these

121. Statements:

Some clocks are radios.

No radio is laptop.

Some fridges are clocks.

Some clocks are laptops.

Conclusions:

I. Some fridges are laptops.

II. No radio is fridge.

III. Laptops are either fridges or clocks.

IV. No laptop is fridge.

- a) Only II follows
- b) Only IV follows
- c) Only either I or IV follows
- (4) Only III follows
- e) None of these

122. Statements:

Some notes are coins.

Some papers are plastics.

All coins are papers.

No note is cardboard.

Conclusions:

I. Some notes are papers

II. Some coins are plastics.

III. No paper is cardboard

IV. No note is plastic.

- a) Only 1 follows
- b) Only I and II follow
- c) Only I and III follow

- d) All follow
- e) None of these

123. Statements:

All stools are desks.
No desk is shelf.
All shelves are cupboards
Some cupboards are mirrors.

Conclusions:

- I. No mirror is shelf.
- II. No stool is shelf.
- III. No cupboard is desk.
- IV. No mirror is desk.

- a) None follows
- b) Only II & III follow
- c) Only II follows
- d) Only II, III and IV follow
- e) None of these

Directions (124-128) : Study the following arrangement carefully and answer the questions given below.

M ? 2 D B 7 A 4 * 9 6 \$ T + N 5 @ V E W # U 8 F © 3

124. How many such prime numbers are there in the given arrangement each of which is immediately followed by a symbol and preceded by a consonant?

- a) None
- b) One
- c) Two
- d) Three
- e) More than three

125. If the places- of the symbols are interchanged with those of the numbers immediately following them in the given arrangement then which of the following will be the eleventh from the right end?

- a) V
- b)@
- c) 5
- d) N
- e) None of these

126. Which of the following is the seventh letter to the left of #?

- a) A
- b) N
- c) T
- d) B
- e) None of these

127. What should come in place of the question mark (?) in the following series based on the above arrangement?

2 7 B 4 6 9 T 5 N ?

- a) @WE
- b) 5EV
- c) VU#
- d) V#W
- e) None of these

128. If the symbols and numbers are dropped from the given arrangement and then the letters are rearranged in alphabetical order which of the following will be the sixth from the left end?

- a) M
- b) F
- c) N
- d) E
- e) None of these

Directions (129-133): Below in each question are given two statements (A) and (B). These statements may be either independent causes or may be effects of independent causes or a common cause. One of these statements may be the effect of the other statement. Read both the statements and then decide which of the following answer choice correctly depicts the relationship between these two statements.

Mark answer a) if statement (A) is the cause and statement (B) is its effect.

Mark answer b) if statement (B) is the cause and statement (A) is its effect.

Mark answer c) if both state merits (A) & (B) are independent causes.

Mark answer d) if both statements (A) & (B) are effects of independent causes.

Mark answer e) if both statements (A) & (B) are effects of some common cause.

129. (A) There has been mass recruitment by IT professionals by Indian IT companies.

(B) Many developed countries are increasingly outsourcing IT related functions to India and China.

130. (A) Many farmers have given up jute cultivation as it is no longer economically viable.

(B) The textile ministry has proposed a hike in the Minimum Support Price of jute.

131. (A) The government is considering changes in the Land Acquisition Act.

(B) Several large infrastructure development projects have been stalled due to unavailability of land

132. (A) The Government is considering the possibility of involving private sector companies in highway construction projects.

(B) The implementation of many highway projects undertaken by government agencies is behind schedule in various states.

133. (A) The price of aircraft fuel has risen during the past few months.

(B) Many passenger airlines in India have been forced to cut their air fares by about 10 percent.

Directions (134-140) : In each

question below is given a group of letters followed by four combinations of digits/symbols numbered a), b), c) and d).

You have to find out which of the combinations correctly represents the group of letters based on the following coding system and the conditions that follow and mark the number of that combination as your answer:

If none of the combinations correctly represents the group of letters, mark e) i.e. 'None of these' as the answer.

Letter: W R A P G B M U S E F T N U

Digit/Symbol Code: \$ S ! 2 7 # 9 @ ? 5 B 4 * 6

Conditions: (i) If the middle letter is a vowel, the codes for the first and the fourth letters are to be interchanged.

(ii) If the first two letters are consonants, the first letter is to be coded, no code may be given to the second letter and the remaining three letters are to be coded.

(iii) If the first letter is a vowel and the last letter is A consonant both are to be coded as the code for the consonant.

134. NEA.ST

- a) ?5!*4
- b) ?5!4*
- c) 4*!5?
- d) 4*!5?
- e) None of these

135. DAEWP

- a) 6!5\$2
- b) \$!562
- c) 6!52\$
- d) \$265!
- e) None of these

36. PEFTG

- a) 25~42
- b) 2~4G5
- c) 25~47
- d) 47~2-5
- e) None of these

37. SMGBE

- a) ?975#
- b) 97#51
- c) ?97#5
- d) ?#79?
- e) None of these

138. UGREN

- a) *785@
- b) *785*
- c) @785@
- d) @85*7
- e) None of these

139. RBMFN.

- a) 8#9~4
- b) ~*98#
- c) 89~*#
- d) 8#9~*
- e) None of these

140. MUTWA

- a) 9@\$4!
- b) 94\$!@
- c) 94@\$
- d) 9@4\$!
- e) None of these

Directions (141-150) : Study the following information carefully and answer the questions which follow.

A bank is disbursing educational loans to meritorious students. Loans will be made available to applicants who possess the following criteria. The candidate must-

- (i) be a citizen of India.
- (ii) have secured admission to a postgraduate course (Masters or P.G. Diploma) offered by an Indian or foreign university in India.
- (iii) have secured 60 percent marks in the entrance examination for the course.
- (iv) have secured (property a) LIC policy) equivalent to the loan amount.

However if the applicant fulfills the above mentioned criteria **except-**

(A) at (ii) above the case may be referred to the Loan committee.

(B) at (iv) above guarantee of a third party who has an account with the bank may be obtained.

Mark answer a) if the loan is to be sanctioned.

Mark answer b) if the loan is to be rejected.

Mark answer c) if the loan is to be referred to the loan committee.

Mark answer d) if guarantee from an account holder is needed.

Mark answer e) if the data provided is inadequate to take a decision.

141. Shruti has secured admission to MNV University in Chennai for a postgraduate degree in management. She obtained 65 percent in the entrance test for the course. She has an Indian passport.

142. Milind has applied and secured admission for a postgraduate degree in advertising at MIC University Ahmedabad. He has an LIC policy equivalent to the loan amount. He secured 70 percent in his graduation and is an Indian citizen.

143. Prakasli has applied for a postgraduate course in IT and Animation which will commence from January in Kolkata. He has secured admission to the course having obtained 60 percent in the written entrance test. His uncle who has an account with the bank is willing to stand guarantor.

144. Anil is an Indian Science graduate who has secured admission for a Masters degree in Computer Science from a prestigious Indian University. He stood first in the entrance test with 82 percent marks. His family is willing to use their house, which is equivalent in value to the loan amount, as security. He will stay with his uncle in Dubai during the course.

145. Nikhil's part time P.G. Diploma in Management will begin in December. He secured 65 percent in the All India entrance exam and has secured admission to a college in Mumbai. He has requested a transfer for the duration of the course. He has an LIC policy equivalent to the loan amount. Nikhil holds an Indian passport.

146. Maria secured 75% in the entrance exam to NVT College Pune and has obtained admission. An Indian national she has the necessary property to offer as security for the loan amount. The duration of her undergraduate degree course in Computer Applications is 3 years.

147. Deepa obtained 70 percent in her engineering entrance examination / Masters and has secured admission to the college of her choice. She has an LIC policy equivalent in value to the loan amount. Her interview to obtain a visa for her course in the U.S. is on November 25. She is an Indian citizen.

148. Sudhir has applied for a postgraduate degree in Pharmacy at Ali India Institute at New Delhi. He is an Indian citizen and having secured 60 percent in his entrance exam, he has been granted admission. He does not have any property to use as security. His father who has an account with the bank is willing to guarantee the loan.

149. Anandi has secured admission for a P.G Diploma in Management at a University in Allahabad with 72 percent in the entrance examination. She has an LIC policy amounting to the loan amount. She is an Indian citizen.

150. Ravi has obtained admission to the Indian Institute of Research at Chandigarh for a Masters in Mathematics offered only to Indian citizens. He secured 68 percent in the entrance test. He does not have any security against the loan. However his employer who has an account with the bank is willing to guarantee the loan.

ANSWERS

Q.1	C	Q.5	C	Q.9	D	Q.13	E
Q.2	A	Q.6	E	Q.10	A	Q.14	B
Q.3	D	Q.7	A	Q.11	B	Q.15	C
Q.4	B	Q.8	D	Q.12	D	Q.16	D

Q.17	D	Q.51	C	Q.85	C	Q.119	D
Q.18	B	Q.52	A	Q.86	E	Q.120	D
Q.19	B	Q.53	B	Q.87	D	Q.121	C
Q.20	C	Q.54	E	Q.88	A	Q.122	A
Q.21	C	Q.55	D	Q.89	B	Q.123	C
Q.22	C	Q.56	E	Q.90	C	Q.124	B
Q.23	E	Q.57	A	Q.91	C	Q.125	C
Q.24	C	Q.58	E	Q.92	E	Q.126	D
Q.25	A	Q.59	B	Q.93	B	Q.127	D
Q.26	B	Q.60	D	Q.94	A	Q.128	A
Q.27	A	Q.61	D	Q.95	D	Q.129	C
Q.28	C	Q.62	E	Q.96	C	Q.130	A
Q.29	D	Q.63	A	Q.97	D	Q.131	B
Q.30	E	Q.64	B	Q.98	E	Q.132	B
Q.31	E	Q.65	C	Q.99	A	Q.133	C
Q.32	A	Q.66	C	Q.100	B	Q.134	A
Q.33	E	Q.67	B	Q.101	A	Q.135	B
Q.34	D	Q.68	C	Q.102	E	Q.136	C
Q.35	B	Q.69	A	Q.103	C	Q.137	E
Q.36	A	Q.70	D	Q.104	E	Q.138	B
Q.37	C	Q.71	B	Q.105	B	Q.139	E
Q.38	D	Q.72	D	Q.106	C	Q.140	D
Q.39	B	Q.73	E	Q.107	D	Q.141	B
Q.40	A	Q.74	A	Q.108	D	Q.142	A
Q.41	C	Q.75	C	Q.109	A	Q.143	B
Q.42	E	Q.76	E	Q.110	D	Q.144	A
Q.43	B	Q.77	A	Q.111	B	Q.145	A
Q.44	C	Q.78	B	Q.112	C	Q.146	A
Q.45	A	Q.79	C	Q.113	D	Q.147	A
Q.46	C	Q.80	D	Q.114	E	Q.148	D
Q.47	D	Q.81	A	Q.115	A	Q.149	A
Q.48	E	Q.82	E	Q.116	E	Q.150	D
Q.49	B	Q.83	B	Q.117	A		
Q.50	B	Q.84	D	Q.118	D		